

## Aflæsning af vibrationsmålere

Dato: 06.08.2021 – uge 31

Placering af målere:

1. Læssøesgade 3
2. Ryesgade 9
3. Ryesgade 17
4. Plejecenteret Sølund, bygning 4

Ifølge miljøstyrelsens bekendtgørelse, er grænseværdien overholdt ved vibrationer under 5 mm/s ved 10 Hz.

### Måler 1 - Læssøesgade 3:

Grænseværdien er ikke overskredet.

### Måler 2 – Ryesgade 9:

Grænseværdien er ikke overskredet.






### Måler 3 – Ryesgade 17:

Grænseværdien er ikke overskredet.

### Måler 4 – Plejecenteret Sølund:

Grænseværdien er ikke overskredet.

Signaturforklaring:

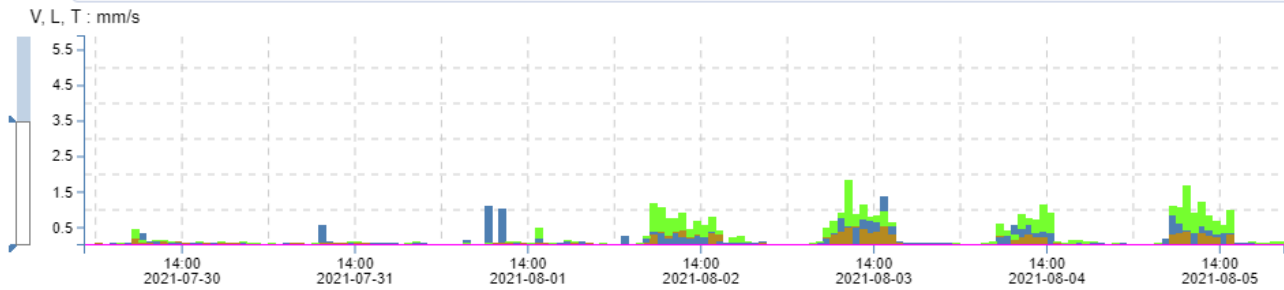
-  = Vertikal vibration
-  = Langsgående vibration
-  = Tværgående vibration
-  = Markering af 3 mm/s ved 10 Hz
-  = Markering af 5 mm/s ved 10 Hz

**01 - 101302, Læssøesgade 3**

↓ Bars

Sensor: C22 #: 101302 Standard: (18B) DIN4150-3 Anlage 25mm/s 1-315Hz Master(s) serial no.: 101302 Aggregate: Maximum  
 Unit: mm/s Latest calibration: 2021-05-07 Quantity: Velocity Interval time: 20 sec Aggregated time: 1 h Frequency weighting: OFF

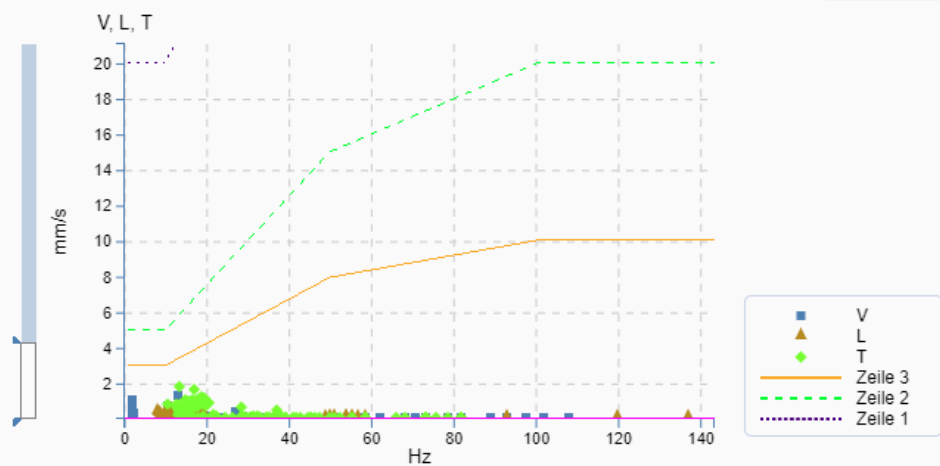
Aggregation of data makes the different units presented unrelated and is not recommended for reporting when related units are needed



**Frequency data**

Benchmark

DIN 4150-3

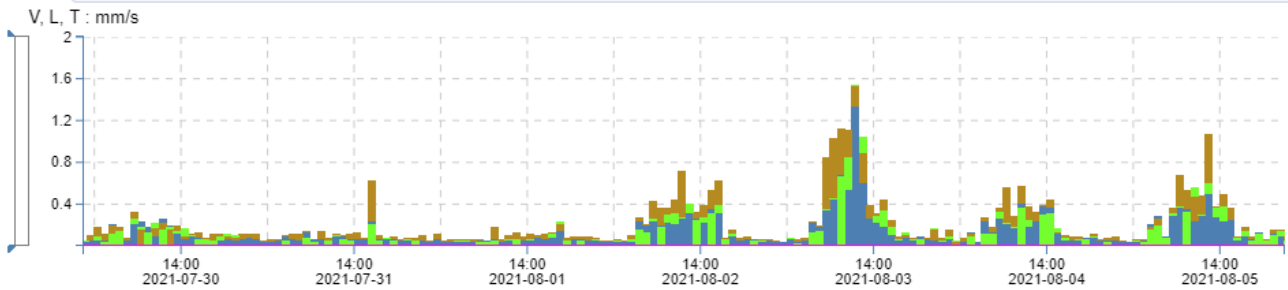


**02 - 101363, Ryesgade 9**

! Bars

Sensor: C22 #: 101363 Standard: (18B) DIN4150-3 Anlage 25mm/s 1-315Hz Master(s) serial no.: 101363 Aggregate: Maximum  
 Unit: mm/s Latest calibration: 2020-10-07 Quantity: Velocity Interval time: 20 sec Aggregated time: 1 h Frequency weighting: OFF

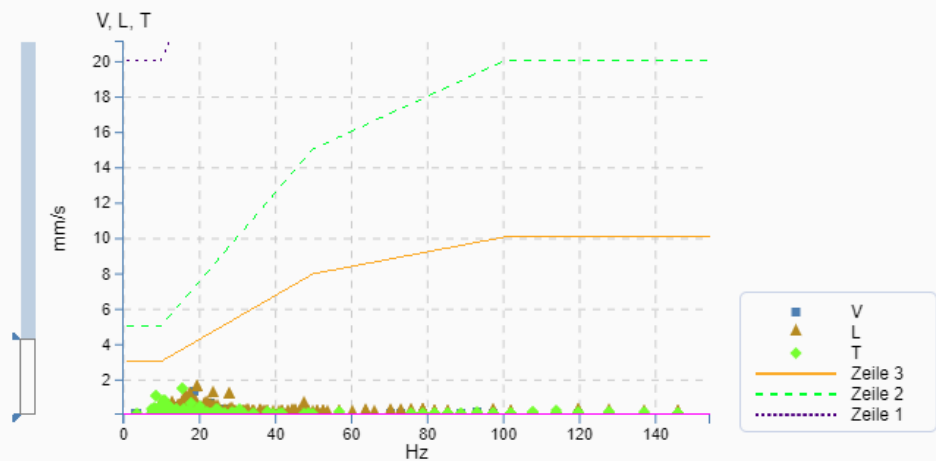
Aggregation of data makes the different units presented unrelated and is not recommended for reporting when related units are needed



**Frequency data**

Benchmark

DIN 4150-3

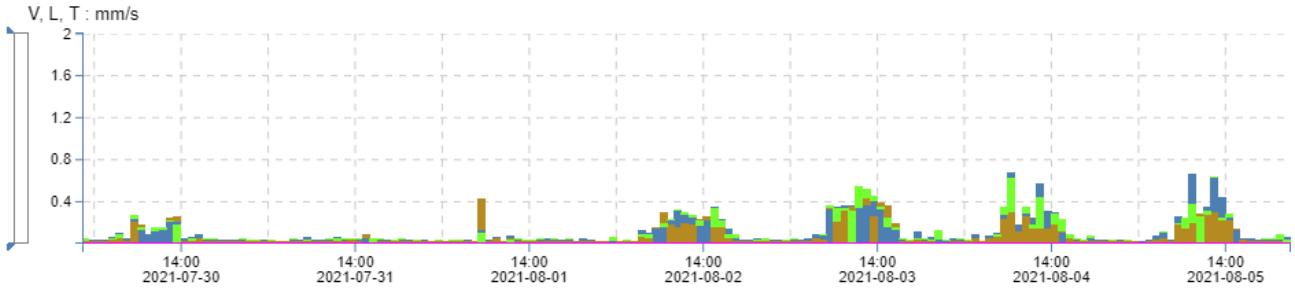


**03 - 102562, Ryesgade 17**

! Bars

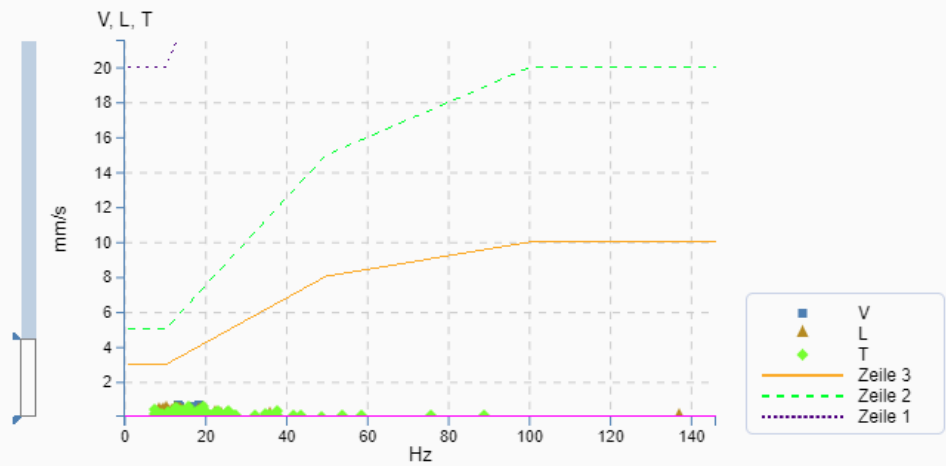
Sensor: C22 #: 102562 Standard: (18B) DIN4150-3 Anlage 25mm/s 1-315Hz Master(s) serial no.: 102562 Aggregate: Maximum  
 Unit: mm/s Latest calibration: 2019-12-10 Quantity: Velocity Interval time: 20 sec Aggregated time: 1 h Frequency weighting: OFF

Aggregation of data makes the different units presented unrelated and is not recommended for reporting when related units are needed



**Frequency data**

Benchmark  
 DIN 4150-3

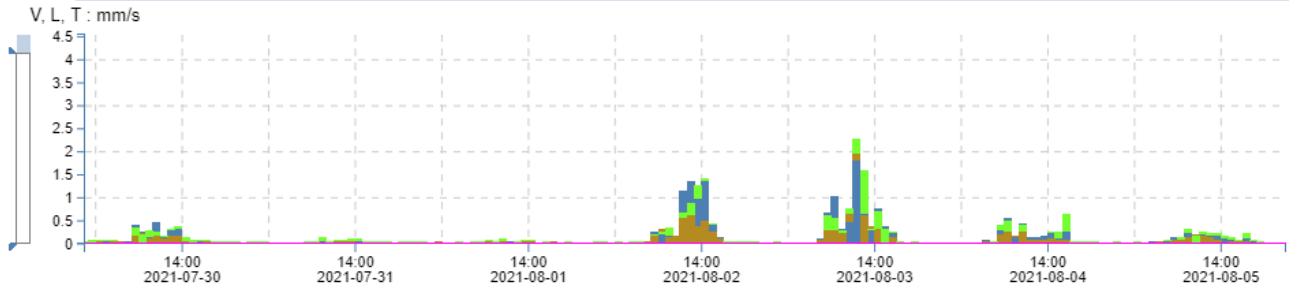


**04 - 106147, Plejecenter Sølund**

Bars

Sensor: C22 #: 106147 Standard: (18B) DIN4150-3 Anlage 25mm/s 1-315Hz Master(s) serial no.: 106147 Aggregate: Maximum  
 Unit: mm/s Latest calibration: 2021-02-26 Quantity: Velocity Interval time: 20 sec Aggregated time: 1 h Frequency weighting: OFF

Aggregation of data makes the different units presented unrelated and is not recommended for reporting when related units are needed



**Frequency data**

Benchmark  
 DIN 4150-3

