

## Aflæsning af vibrationsmålere

Dato: 04.06.2021 – uge 22

Placering af målere:

1. Læssøsgade 3
2. Ryesgade 9
3. Ryesgade 17
4. Plejecenteret Sølund, bygning 4

Signaturforklaring:

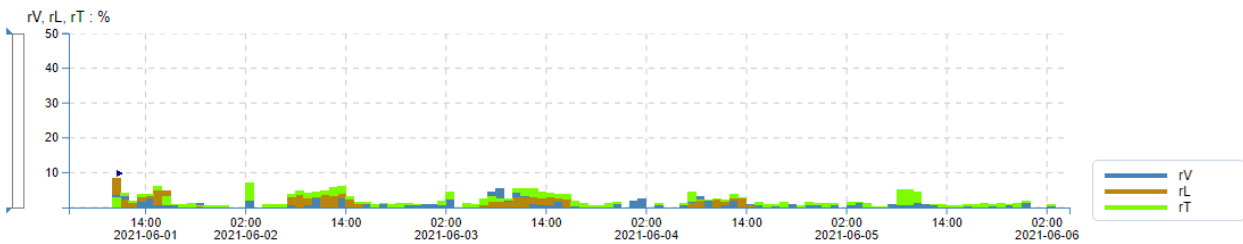
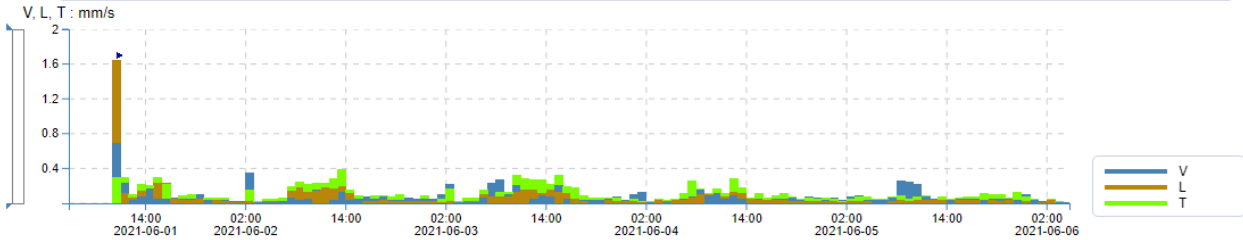
<b>V</b>	= Vertikal vibration
<b>L</b>	= Langsgående vibration
<b>T</b>	= Tværgående vibration
<b>rV</b>	= Relativ vertikal vibration - % af grænseværdien
<b>rL</b>	= Relativ langsgående vibration - % af grænseværdien
<b>rT</b>	= Relativ tværgående vibration - % af grænseværdien

Under "Frequency data", er grænseværdien markeret med en grøn stiplede linje, "Zeile 2".

01 - 101302, Læssøesgade 3 ! PNG -

Sensor: C22 # 101302 Standard: (18B) DIN4150-3 Anlage 25mm/s 1-315Hz Master(s) serial no.: 101302 Aggregate: Maximum  
 Unit: mm/s, % Latest calibration: 2021-05-07 Quantity: Velocity Interval time: 20 sec Aggregated time: 1 h Frequency weighting: Zeile 2

Aggregation of data makes the different units presented unrelated and is not recommended for reporting when related units are needed

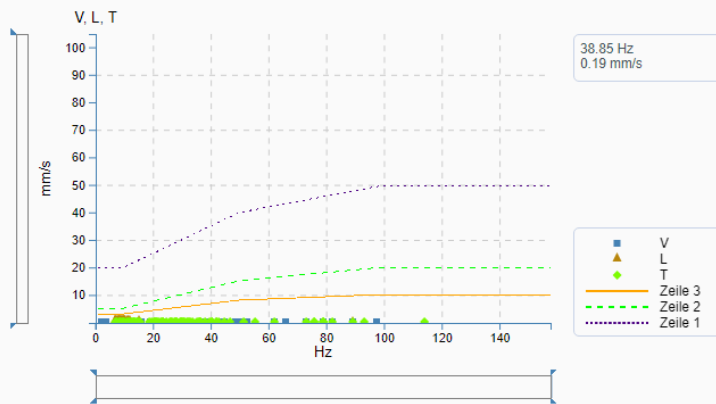


Frequency data

Benchmark

DIN 4150-3

38.85 Hz  
0.19 mm/s

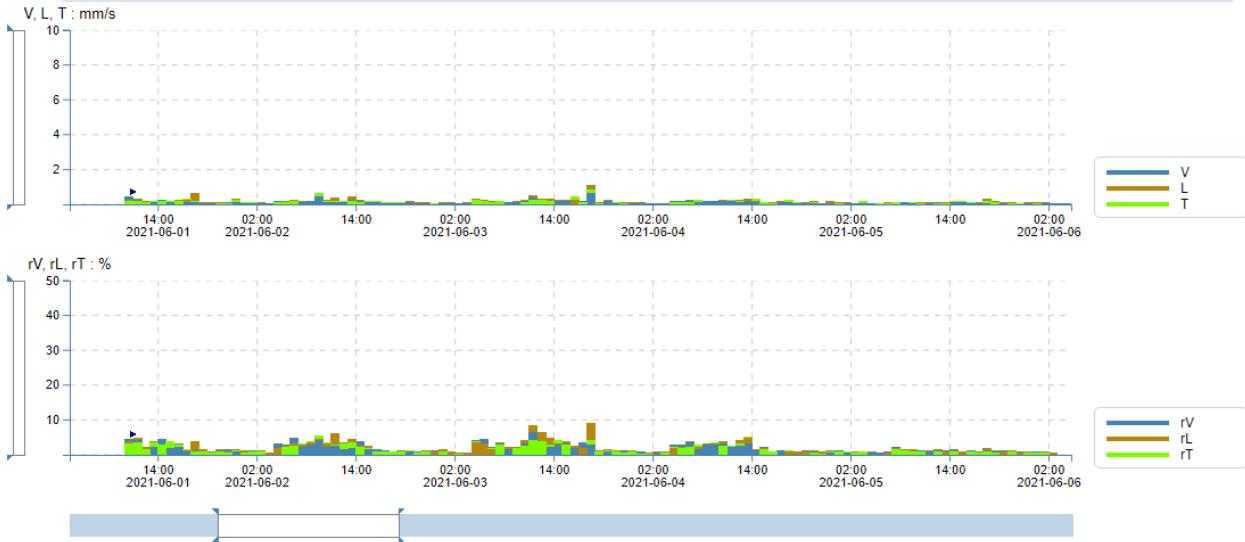


Selected range 4 days 23 hours 53 min | Coverage V: 96.64%, L: 96.64%, T: 96.64%, rV: 53.78%, rL: 30.25%, rT: 83.19%

02 - 101363, Ryesgade 9 ! PNG -

Sensor: C22 # 101363 Standard: (18B) DIN4150-3 Anlage 25mm/s 1-315Hz Master(s) serial no.: 101363 Aggregate: Maximum  
Unit: mm/s, % Latest calibration: 2020-10-07 Quantity: Velocity Interval time: 20 sec Aggregated time: 1 h Frequency weighting: Zeile 2

Aggregation of data makes the different units presented unrelated and is not recommended for reporting when related units are needed

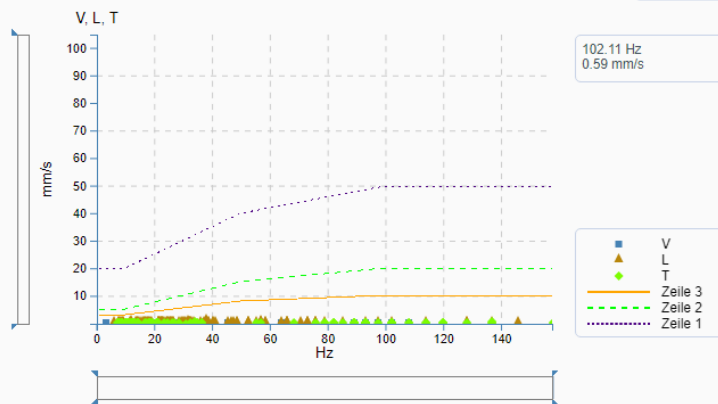


Frequency data



Benchmark

DIN 4150-3

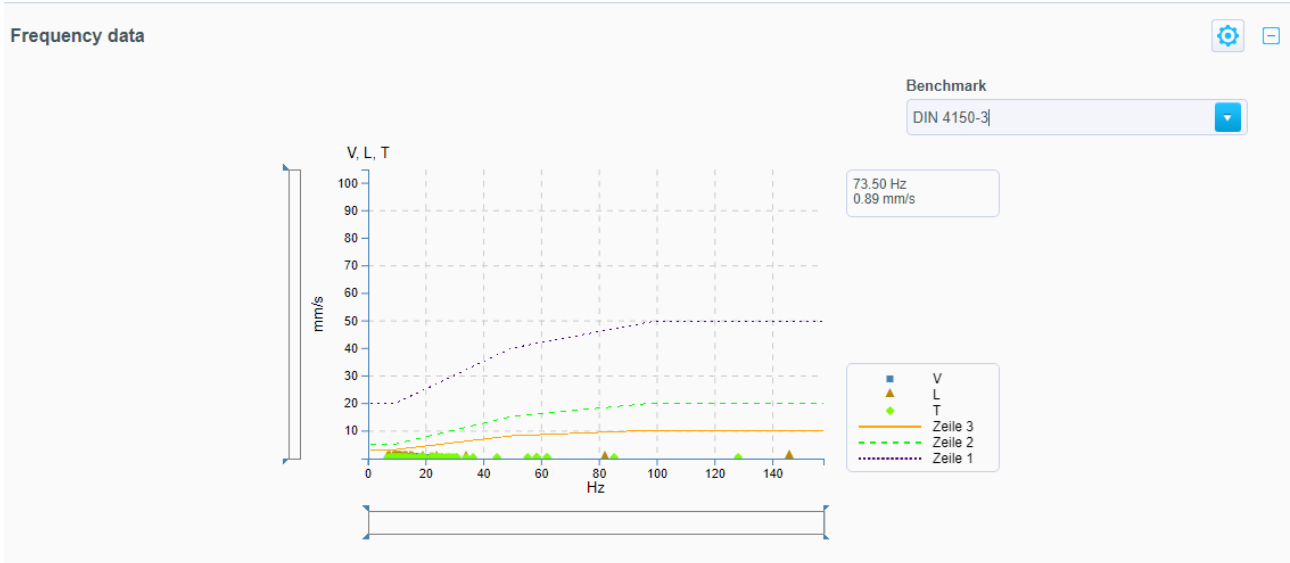
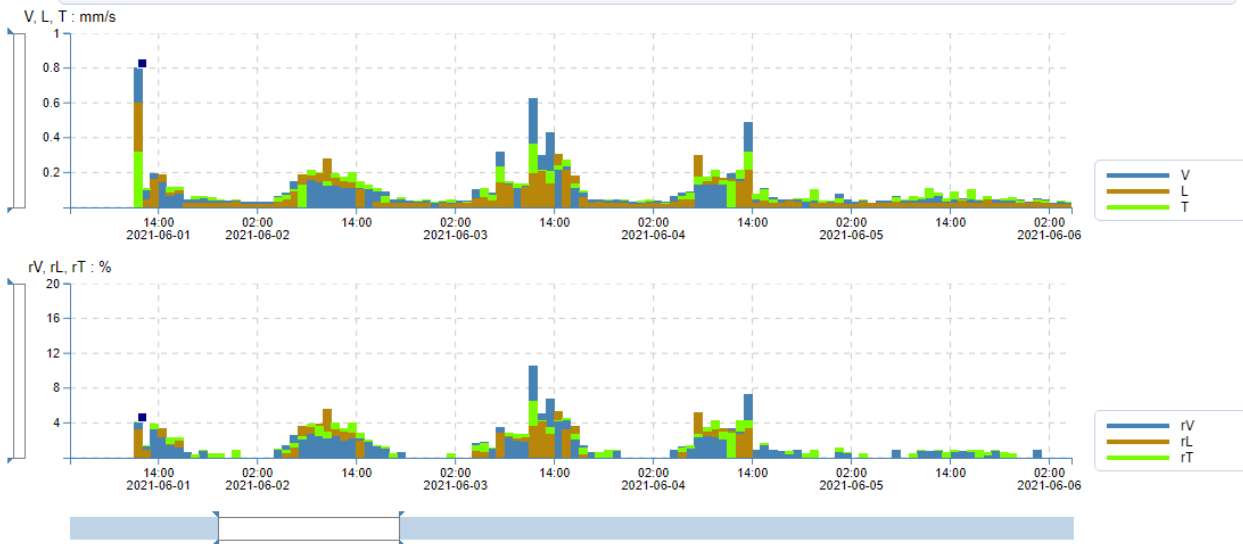


Selected range 5 days 1 hour 25 min | Coverage V: 95.04%, L: 95.04%, T: 95.04%, rV: 86.78%, rL: 93.39%, rT: 86.78%

03 - 102562, Ryesgade 17 ! PNG -

Sensor: C22 # 102562 Standard: (18B) DIN4150-3 Anlage 25mm/s 1-315Hz Master(s) serial no.: 102562 Aggregate: Maximum  
 Unit: mm/s, % Latest calibration: 2019-12-10 Quantity: Velocity Interval time: 20 sec Aggregated time: 1 h Frequency weighting: Zeile 2

Aggregation of data makes the different units presented unrelated and is not recommended for reporting when related units are needed



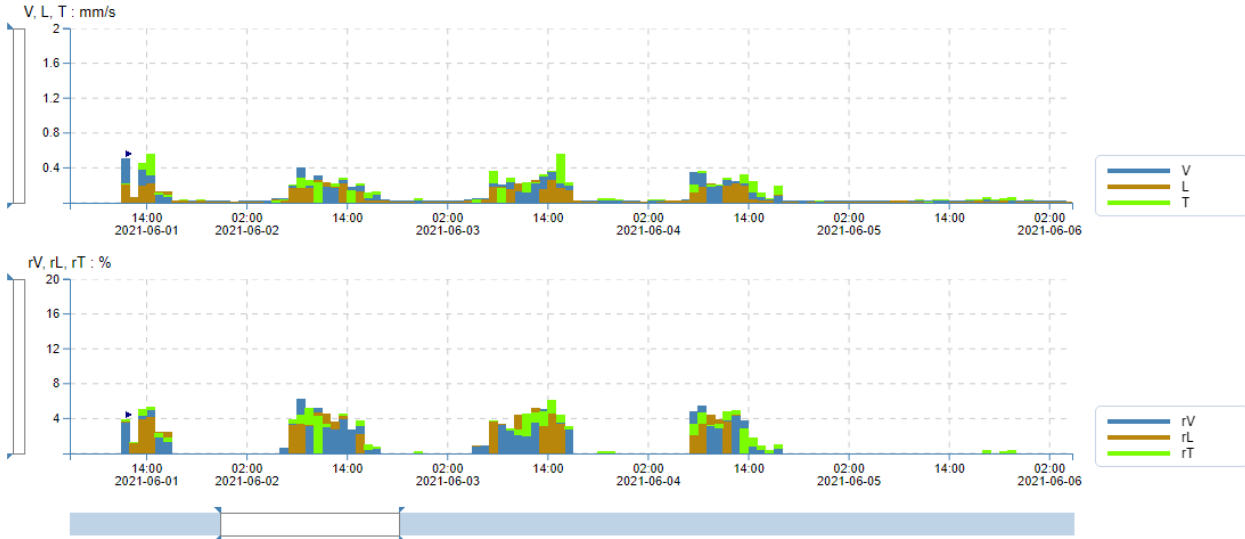
Selected range 5 days 1 hour 25 min | Coverage V: 94.21%, L: 94.21%, T: 94.21%, rV: 55.37%, rL: 31.40%, rT: 66.94%

04 - 106147, Plejecenter Sølund



Sensor: C22 # 106147 Standard: (18B) DIN4150-3 Anlage 25mm/s 1-315Hz Master(s) serial no.: 106147 Aggregate: Maximum  
 Unit: mm/s, % Latest calibration: 2021-02-26 Quantity: Velocity Interval time: 20 sec Aggregated time: 1 h Frequency weighting: Zeile 2

Aggregation of data makes the different units presented unrelated and is not recommended for reporting when related units are needed

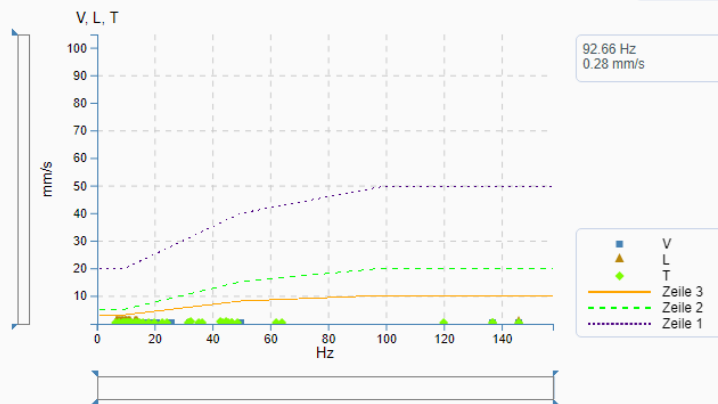


Frequency data



Benchmark

DIN 4150-3



Selected range 4 days 23 hours 53 min | Coverage V: 95.80%, L: 95.80%, T: 95.80%, rV: 33.61%, rL: 28.57%, rT: 36.97%