

Aflæsning af vibrationsmålere

Dato: 11.06.2021 – uge 23

Placering af målere:

1. Læssøesgade 3
2. Ryesgade 9
3. Ryesgade 17
4. Plejecenteret Sølund, bygning 4

Signaturforklaring:

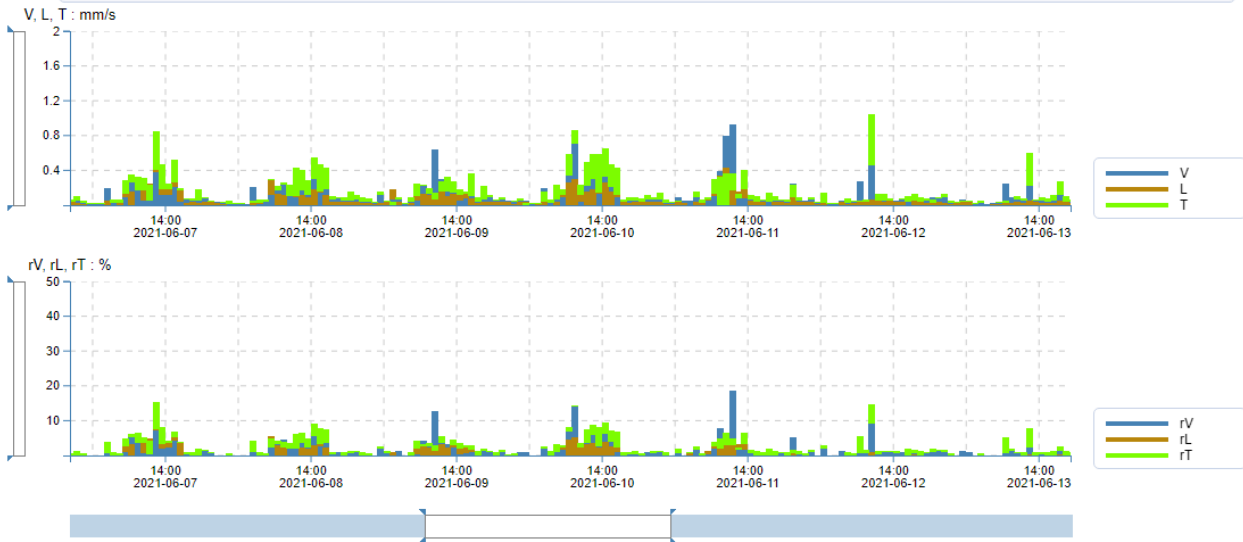
V	= Vertikal vibration
L	= Langsgående vibration
T	= Tværgående vibration
rV	= Relativ vertikal vibration - % af grænseværdien
rL	= Relativ langsgående vibration - % af grænseværdien
rT	= Relativ tværgående vibration - % af grænseværdien

Under "Frequency data", er grænseværdien markeret med en grøn stiplede linje, "Zeile 2".

01 - 101302, Læssøesgade 3 ! PNG -

Sensor: C22 # 101302 Standard: (18B) DIN4150-3 Anlage 25mm/s 1-315Hz Master(s) serial no.: 101302 Aggregate: Maximum
 Unit: mm/s, % Latest calibration: 2021-05-07 Quantity: Velocity Interval time: 20 sec Aggregated time: 1 h Frequency weighting: Zeile 2

Aggregation of data makes the different units presented unrelated and is not recommended for reporting when related units are needed

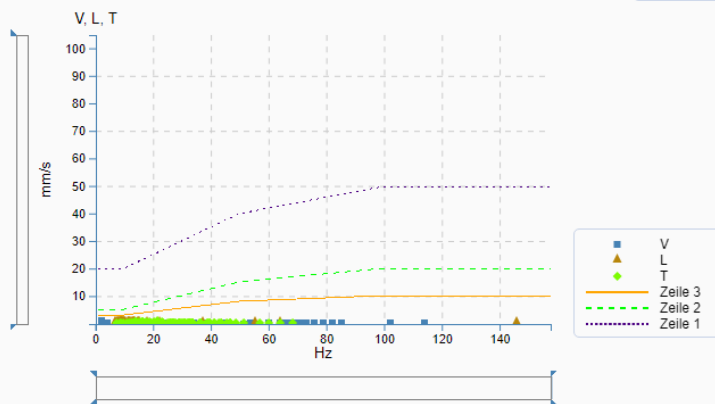


Frequency data



Benchmark

DIN 4150-3

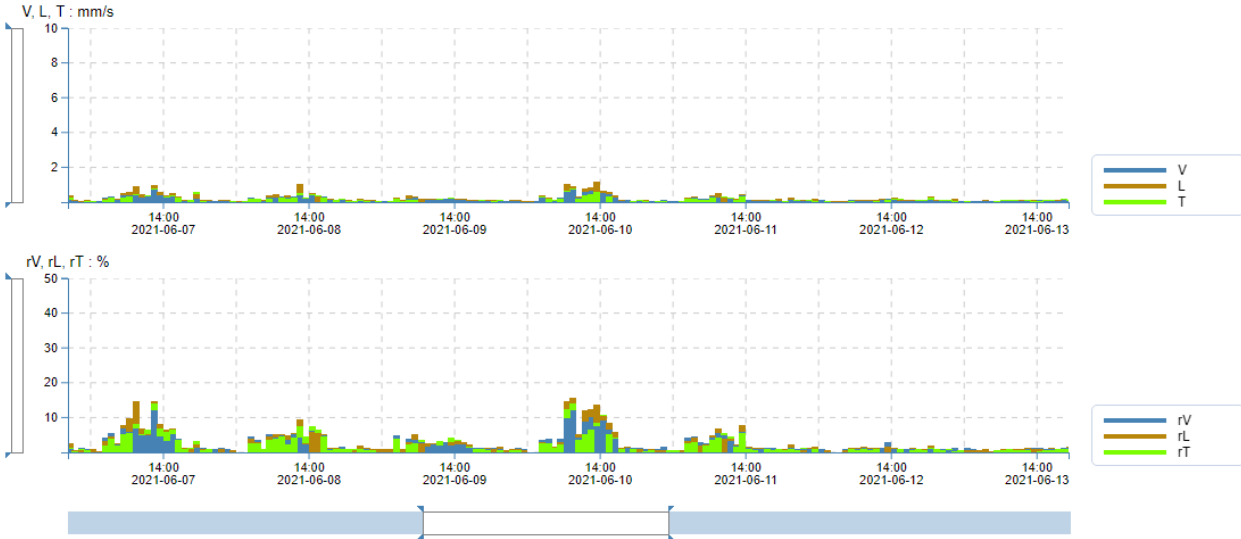


Selected range 6 days 20 hours 56 min | Coverage V: 100%, L: 100%, T: 100%, rV: 61.59%, rL: 32.93%, rT: 85.37%

02 - 101363, Ryesgade 9 PNG

Sensor: C22 # 101363 Standard: (18B) DIN4150-3 Anlage 25mm/s 1-315Hz Master(s) serial no.: 101363 Aggregate: Maximum
Unit: mm/s, % Latest calibration: 2020-10-07 Quantity: Velocity Interval time: 20 sec Aggregated time: 1 h Frequency weighting: Zeile 2

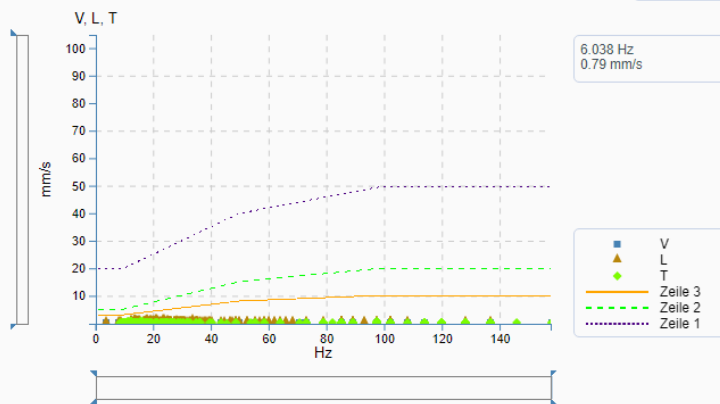
Aggregation of data makes the different units presented unrelated and is not recommended for reporting when related units are needed



Frequency data

Benchmark

DIN 4150-3



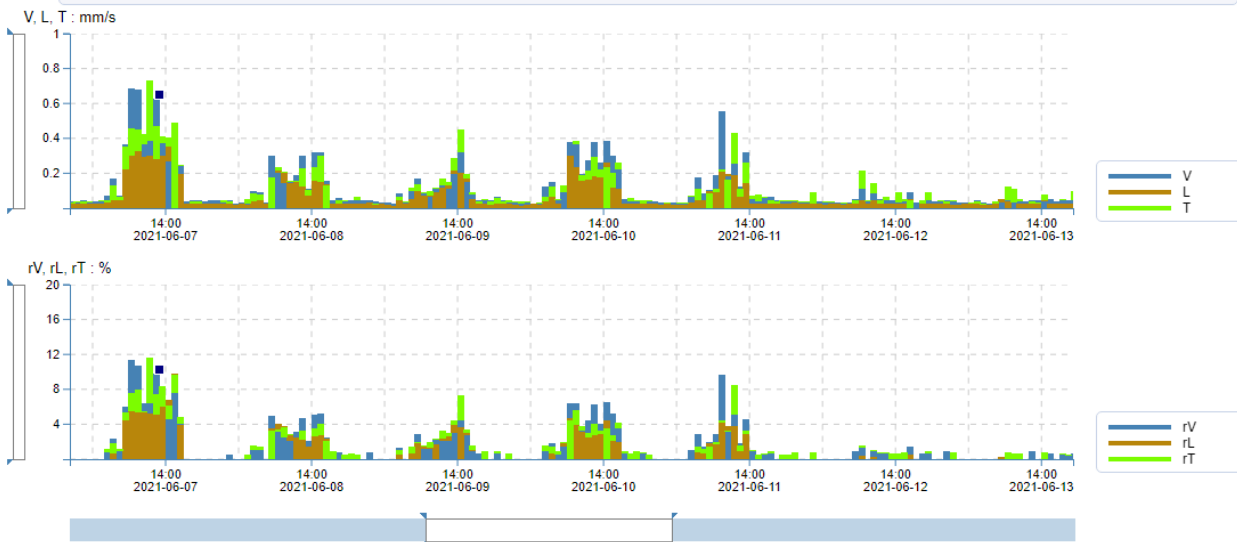
Selected range 6 days 20 hours 56 min | Coverage V: 100%, L: 100%, T: 100%, rV: 90.24%, rL: 98.17%, rT: 88.41%

03 - 102562, Ryesgade 17



Sensor: C22 # 102562 Standard: (18B) DIN4150-3 Anlagte 25mm/s 1-315Hz Master(s) serial no.: 102562 Aggregate: Maximum
Unit: mm/s, % Latest calibration: 2019-12-10 Quantity: Velocity Interval time: 20 sec Aggregated time: 1 h Frequency weighting: Zeile 2

Aggregation of data makes the different units presented unrelated and is not recommended for reporting when related units are needed

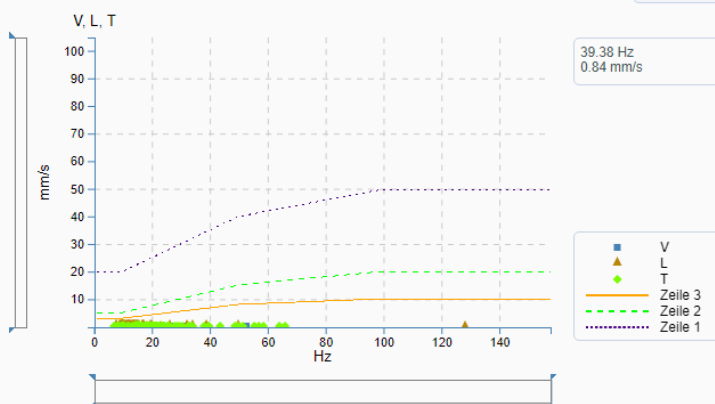


Frequency data



Benchmark

DIN 4150-3



Selected range 6 days 20 hours 56 min | Coverage V: 100%, L: 100%, T: 100%, rV: 51.22%, rL: 34.76%, rT: 60.37%

04 - 106147, Plejecenter Sølund PNG

Sensor: C22 # 106147 Standard: (18B) DIN4150-3 Anlage 25mm/s 1-315Hz Master(s) serial no.: 106147 Aggregate: Maximum
Unit: mm/s, % Latest calibration: 2021-02-26 Quantity: Velocity Interval time: 20 sec Aggregated time: 1 h Frequency weighting: Zeile 2

Aggregation of data makes the different units presented unrelated and is not recommended for reporting when related units are needed

