

Aflæsning af vibrationsmålere

Dato: 25.06.2021 – uge 25

Placering af målere:

1. Læssøesgade 3
2. Ryesgade 9
3. Ryesgade 17
4. Plejecenteret Sølund, bygning 4

Signaturforklaring:

V	= Vertikal vibration
L	= Langsgående vibration
T	= Tværgående vibration
rV	= Relativ vertikal vibration - % af grænseværdien
rL	= Relativ langsgående vibration - % af grænseværdien
rT	= Relativ tværgående vibration - % af grænseværdien

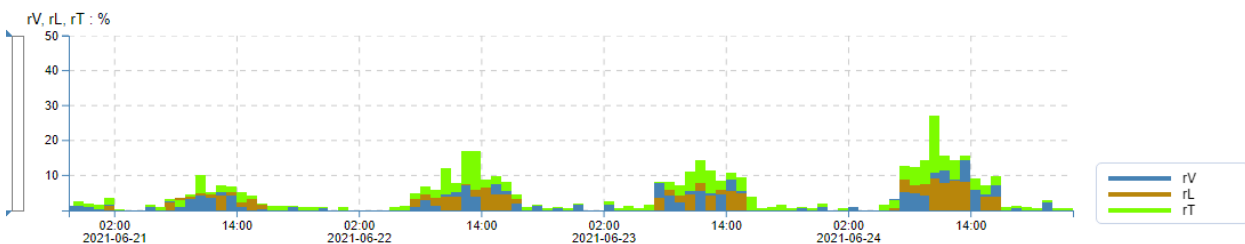
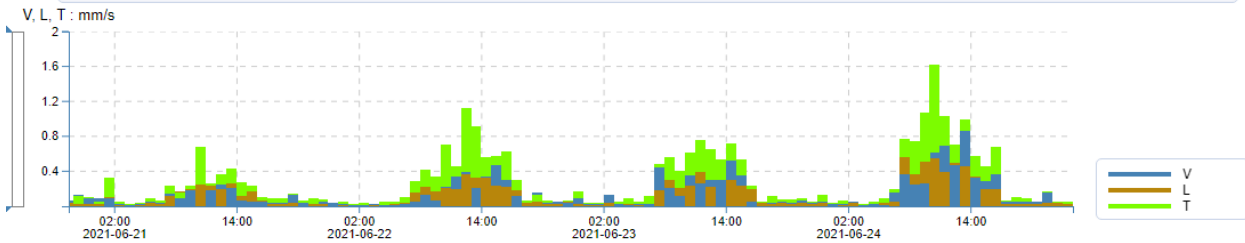
Under "Frequency data", er grænseværdien markeret med en grøn stiplede linje, "Zeile 2".

01 - 101302, Læssøesgade 3



Sensor: C22 #: 101302 Standard: (18B) DIN4150-3 Anlage 25mm/s 1-315Hz Master(s) serial no.: 101302 Aggregate: Maximum
 Unit: mm/s, % Latest calibration: 2021-05-07 Quantity: Velocity Interval time: 20 sec Aggregated time: 1 h Frequency weighting: Zeile 2

Aggregation of data makes the different units presented unrelated and is not recommended for reporting when related units are needed

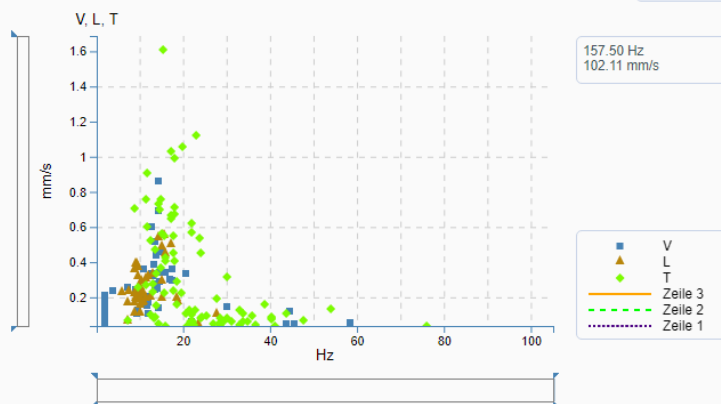


Frequency data



Benchmark

DIN 4150-3



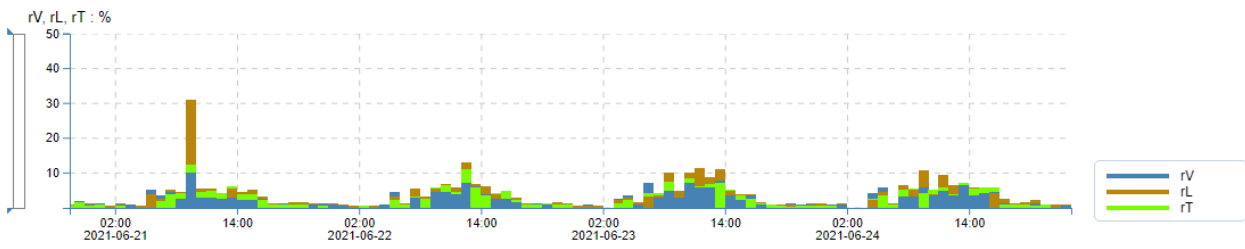
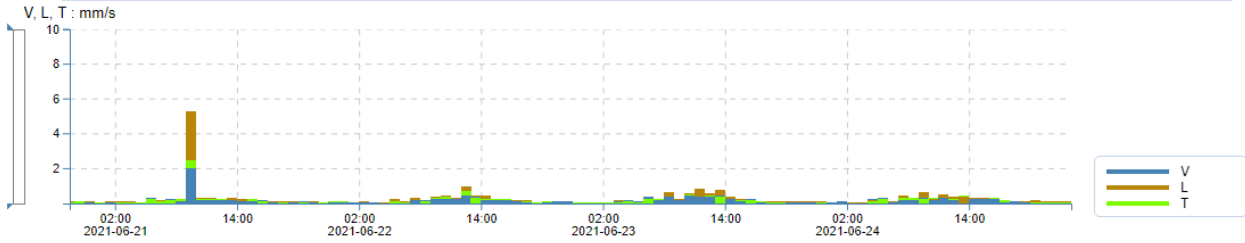
Selected range 4 days 2 hours 30 min | Coverage V: 100%, L: 100%, T: 100%, rV: 59.18%, rL: 44.90%, rT: 87.76%

02 - 101363, Ryesgade 9



Sensor: C22 # 101363 Standard: (18B) DIN4150-3 Anlage 25mm/s 1-315Hz Master(s) serial no.: 101363 Aggregate: Maximum
Unit: mm/s, % Latest calibration: 2020-10-07 Quantity: Velocity Interval time: 20 sec Aggregated time: 1 h Frequency weighting: Zeile 2

Aggregation of data makes the different units presented unrelated and is not recommended for reporting when related units are needed

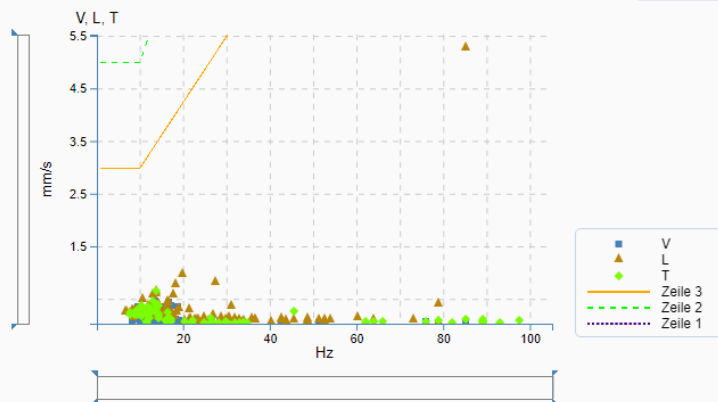


Frequency data



Benchmark

DIN 4150-3



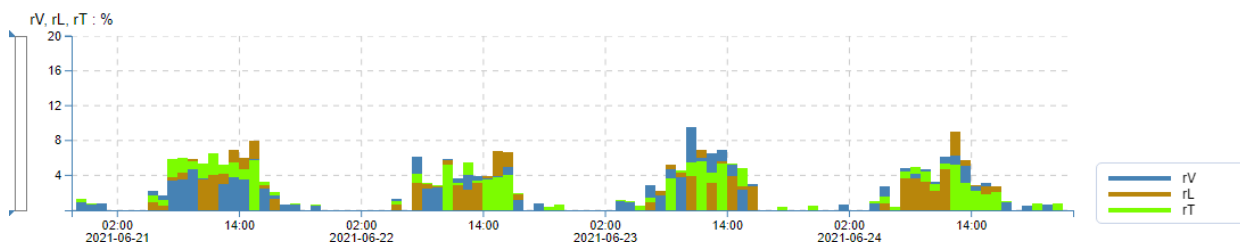
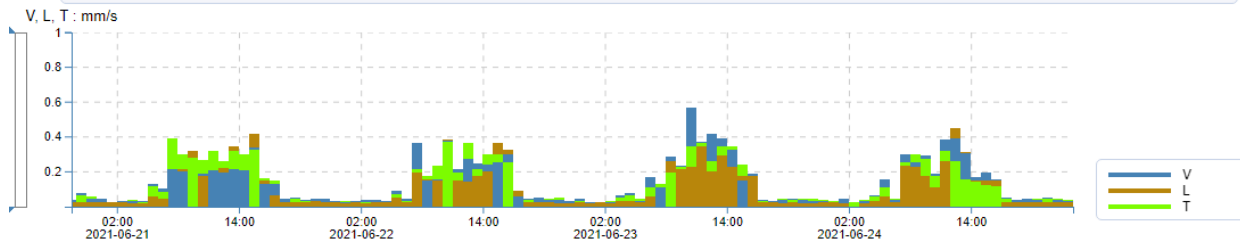
Selected range 4 days 2 hours 30 min | Coverage V: 100%, L: 100%, T: 100%, rV: 92.86%, rL: 97.96%, rT: 89.80%

03 - 102562, Ryesgade 17



Sensor: C22 # 102562 Standard: (18B) DIN4150-3 Anlage 25mm/s 1-315Hz Master(s) serial no.: 102562 Aggregate: Maximum
Unit: mm/s, % Latest calibration: 2019-12-10 Quantity: Velocity Interval time: 20 sec Aggregated time: 1 h Frequency weighting: Zeile 2

Aggregation of data makes the different units presented unrelated and is not recommended for reporting when related units are needed

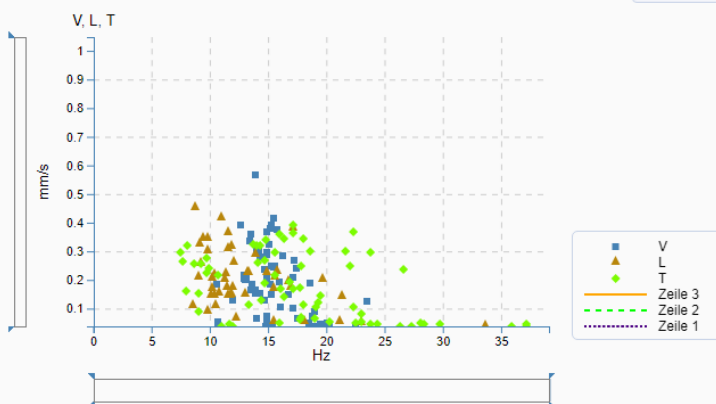


Frequency data



Benchmark

DIN 4150-3

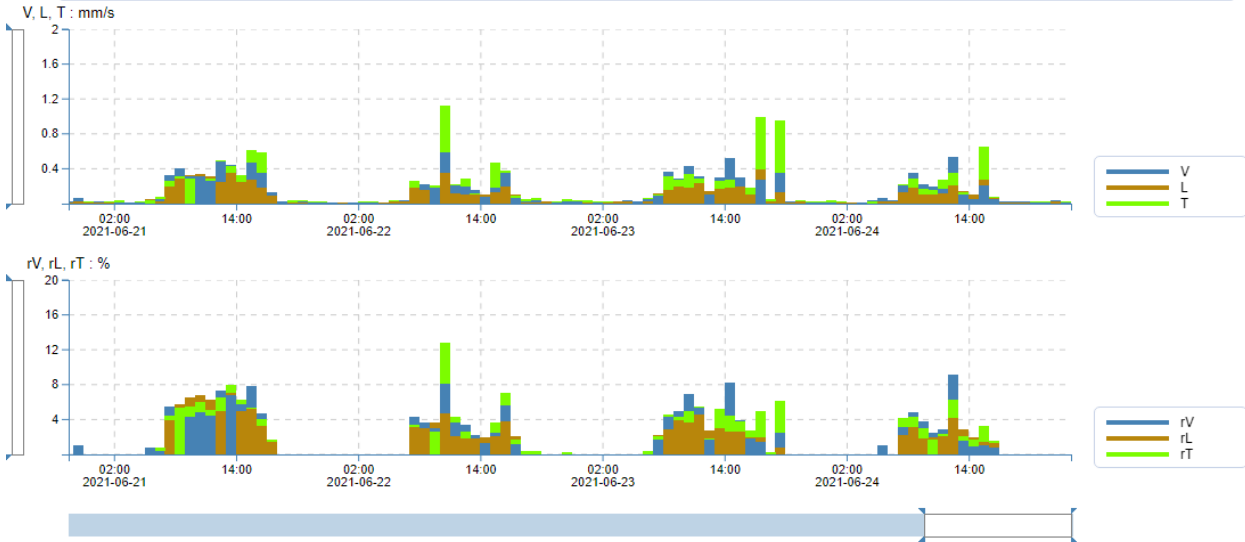


Selected range 4 days 2 hours 30 min | Coverage V: 100%, L: 100%, T: 100%, rV: 62.24%, rL: 47.96%, rT: 69.39%

04 - 106147, Plejecenter Sølund ! PNG -

Sensor: C22 #: 106147 Standard: (18B) DIN4150-3 Anlage 25mm/s 1-315Hz Master(s) serial no.: 106147 Aggregate: Maximum
 Unit: mm/s, % Latest calibration: 2021-02-26 Quantity: Velocity Interval time: 20 sec Aggregated time: 1 h Frequency weighting: Zeile 2

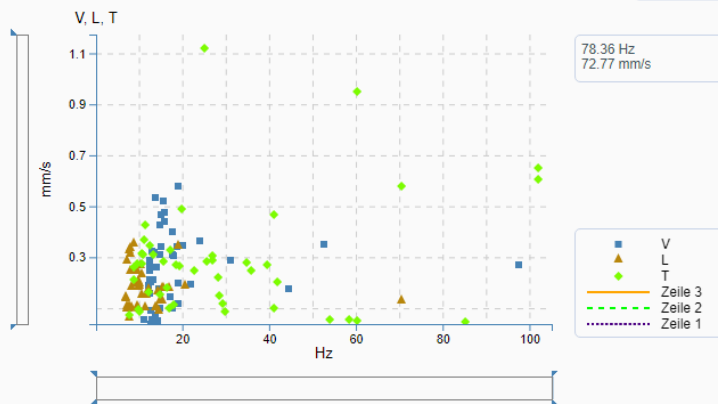
Aggregation of data makes the different units presented unrelated and is not recommended for reporting when related units are needed



Frequency data ⚙️ ☰

Benchmark

DIN 4150-3 ▼



Selected range 4 days 2 hours 30 min | Coverage V: 100%, L: 100%, T: 100%, rV: 48.98%, rL: 44.90%, rT: 51.02%