

## Aflæsning af Vibrationsmålere

Grænseværdi for vibrationer forårsaget af rammearbejder må ikke overskride grænseværdierne i DIN4150-3 under kat.2 eller 3. Kravet er skærpet til 3mm/s målt ved terræn-niveau for nedramning af pæle uafhængig af frekvens.

### Placering af målere og konklusion:

**Måler 1 - Læssøesgade 14B**

Grænseværdien er ikke overskredet

**Måler 2 - Læssøesgade 9**

Grænseværdien er ikke overskredet

**Måler 3 - Ryesgade 20**

Grænseværdien er ikke overskredet

**Måler 4 - Læssøesgade 16, baggård**

Grænseværdien er ikke overskredet

**Måler 5 - Læssøesgade 13A**

Grænseværdien er ikke overskredet

**Måler 6 - Ryesgade 9**

Grænseværdien er ikke overskredet

**Måler 7 - Læssøesgade 3**

Grænseværdien er ikke overskredet

**Måler 8 - Læssøesgade 5**

Grænseværdien er ikke overskredet

**Måler 9 - Holm's Auto matic**

Grænseværdien er ikke overskredet

**Måler 10 - Ryesgade 15-17**

Grænseværdien er ikke overskredet

**Måler 11- Schleppegrellsgade 10**

Grænseværdien er ikke overskredet

**Måler 12 - Læssøesgade 16**

Grænseværdien er ikke overskredet

**Måler 13 - Læssøesgade 10-12**

Grænseværdien er ikke overskredet

**RÅDATA - bygningsvibrationsovervågning**

**SØLUND  
RYESGADE  
2200 KØBENHAVN N**  
(Rekv. sagsnr.: 263720/TRN)

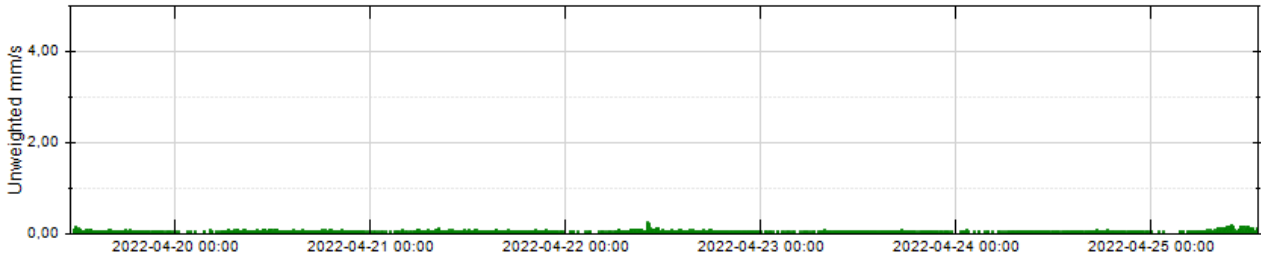
**19. - 25. APRIL 2022**

**Report: Multi report**

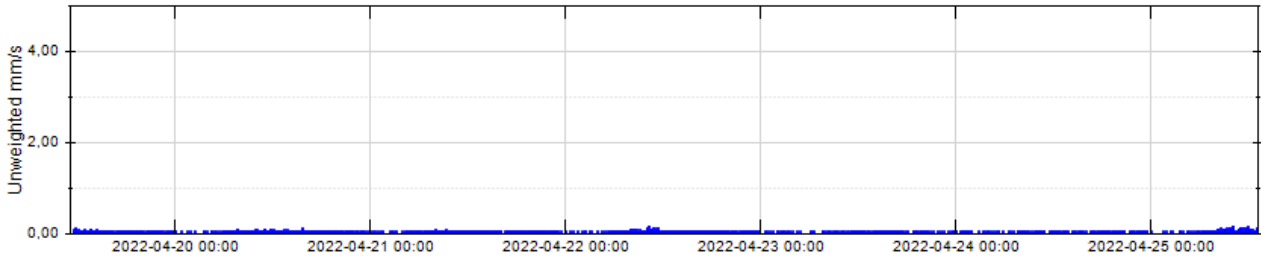
**Project:** Sølund - Ryesgade\_KBH - PAA

**From:** 19-04-2022 00:00:00  
**To:** 25-04-2022 23:59:59  
**Values from:** 19-04-2022 11:33:40  
**Values up to:** 25-04-2022 13:04:00

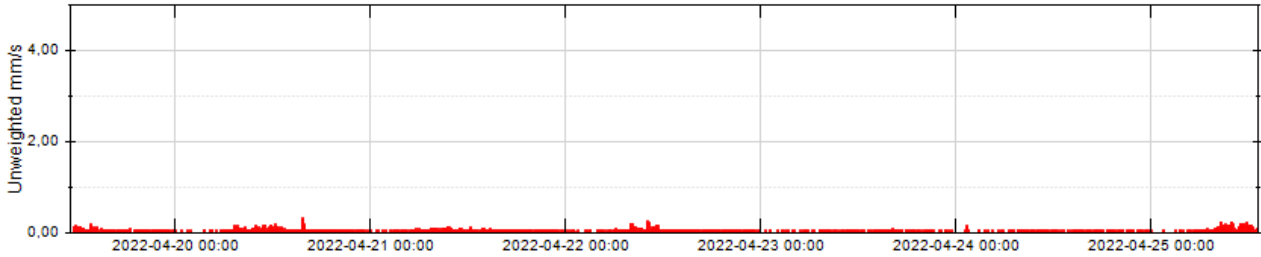
01 - 66400 V Læssøesgade 14B C12V, S/N: 66400, Calibrated: 27-03-2022 DIN4150-3 + Freq 25 mm/s 1-315Hz, Z3



01 - 66400 L Læssøesgade 14B C12L, S/N: 66401, Calibrated: 27-03-2022 DIN4150-3 + Freq 25 mm/s 1-315Hz, Z3

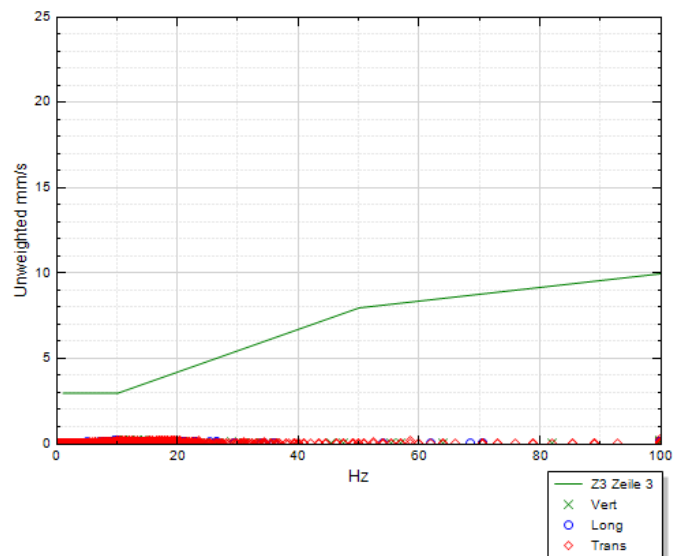


01 - 66400 T Læssøesgade 14B C12T, S/N: 66402, Calibrated: 27-03-2022 DIN4150-3 + Freq 25 mm/s 1-315Hz, Z3



DIN4150-3

	C12V	C12L	C12T
<b>Unw Max:</b>	0,23 mm/s	0,16 mm/s	0,31 mm/s
<b>Frequency:</b>	11,5 Hz	10,0 Hz	256,0 Hz
<b>Date:</b>	22-04-2022	22-04-2022	20-04-2022
<b>Time:</b>	10:12:00	10:14:00	15:46:40
<b>Customer:</b>			
<b>Notes:</b>			



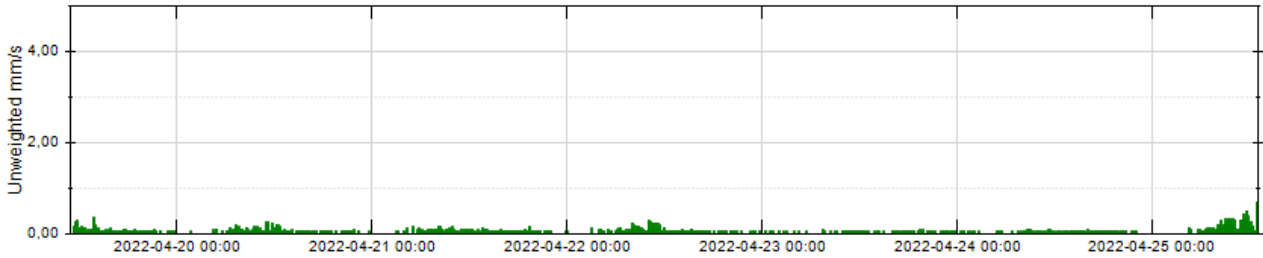
Unw = Unweighted

**Report: Multi report**

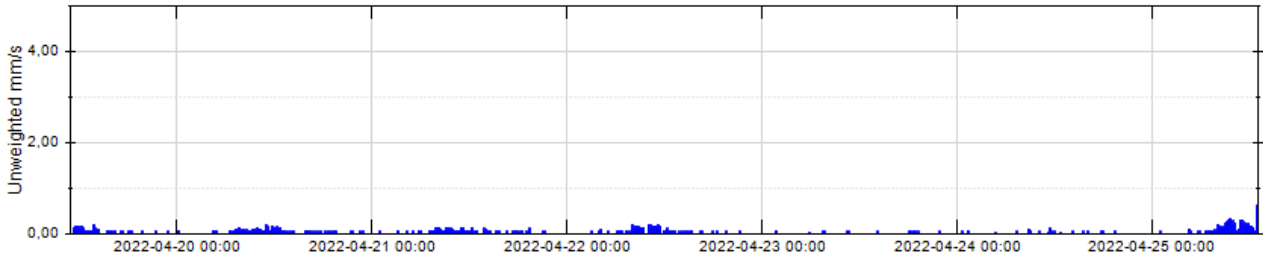
**Project:** Sølund - Ryesgade\_KBH - PAA

**From:** 19-04-2022 00:00:00  
**To:** 25-04-2022 23:59:59  
**Values from:** 19-04-2022 11:17:20  
**Values up to:** 25-04-2022 13:01:40

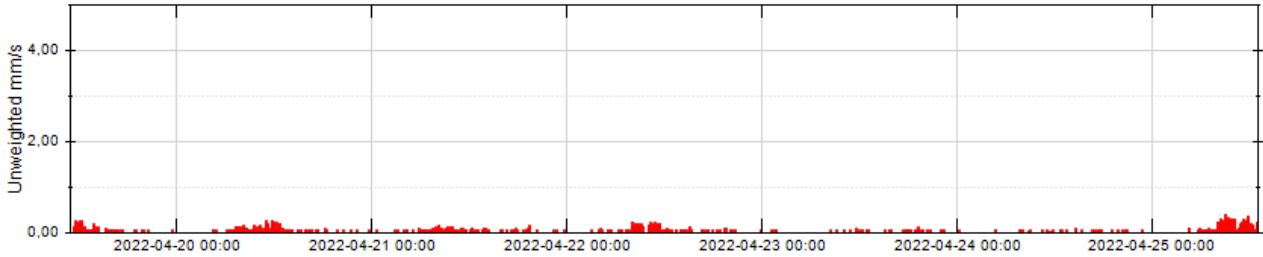
02 - 69410 V Læssøesgade 9      C12V, S/N: 69410, Calibrated: 05-10-2021      DIN4150-3 + Freq 25 mm/s 1-315Hz, Z3



02 - 69410 L Læssøesgade 9      C12L, S/N: 69411, Calibrated: 05-10-2021      DIN4150-3 + Freq 25 mm/s 1-315Hz, Z3

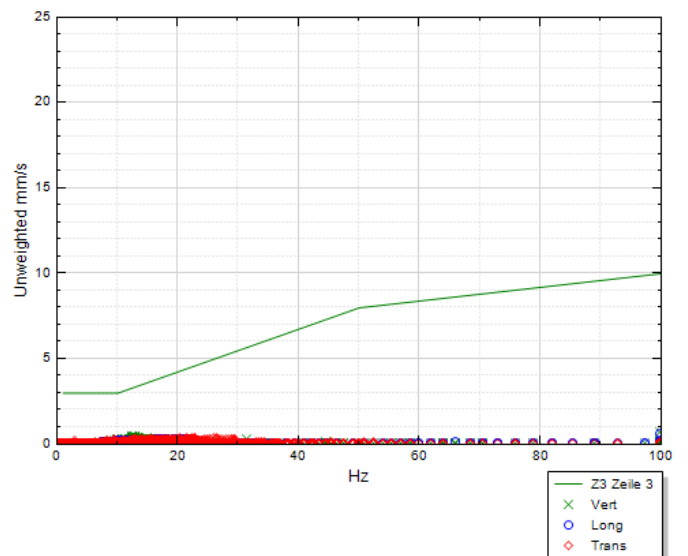


02 - 69410 T Læssøesgade 9      C12T, S/N: 69412, Calibrated: 05-10-2021      DIN4150-3 + Freq 25 mm/s 1-315Hz, Z3



DIN4150-3

	C12V	C12L	C12T
<b>Unw Max:</b>	0,68 mm/s	0,61 mm/s	0,38 mm/s
<b>Frequency:</b>	171,0 Hz	171,0 Hz	20,5 Hz
<b>Date:</b>	25-04-2022	25-04-2022	25-04-2022
<b>Time:</b>	13:01:40	13:01:40	09:03:40
<b>Customer:</b>			
<b>Notes:</b>			



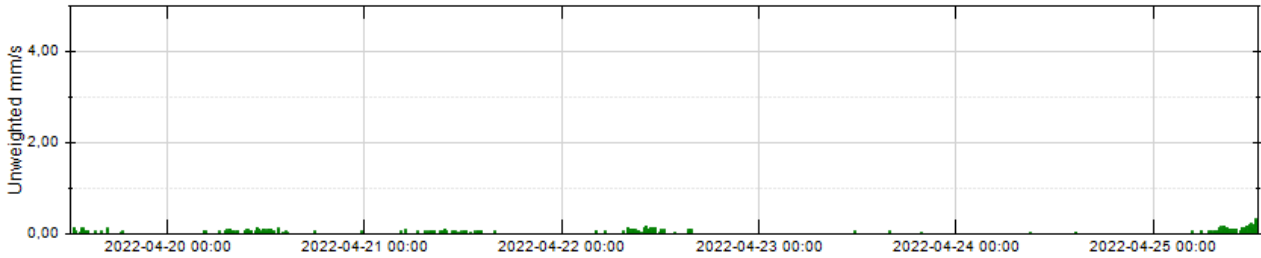
Unw = Unweighted

**Report: Multi report**

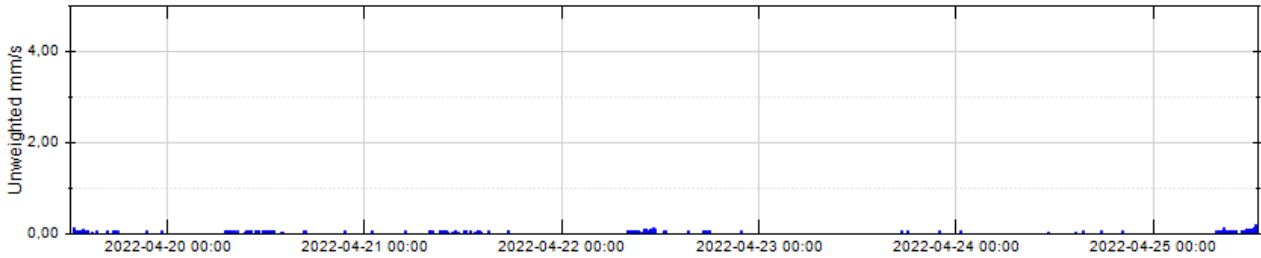
**Project:** Sølund - Ryesgade\_KBH - PAA

**From:** 19-04-2022 00:00:00  
**To:** 25-04-2022 23:59:59  
**Values from:** 19-04-2022 12:37:40  
**Values up to:** 25-04-2022 12:41:20

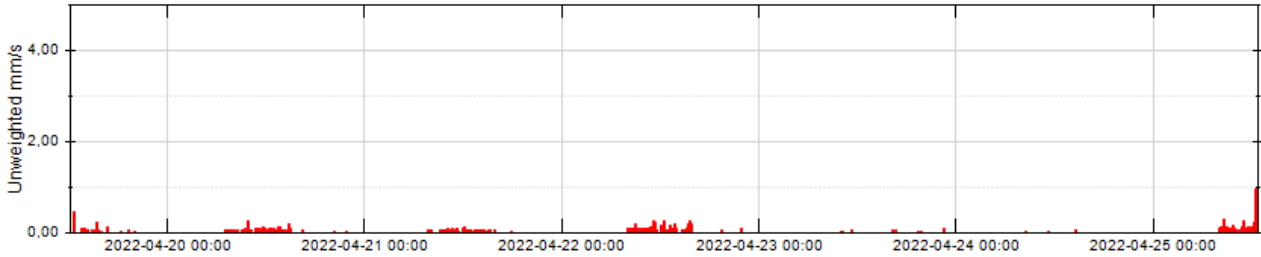
03 - 65090 V Ryesgade 20      C12V, S/N: 65090, Calibrated: 24-02-2021      DIN4150-3 + Freq 25 mm/s 1-315Hz, Z3



03 - 65090 L Ryesgade 20      C12L, S/N: 65091, Calibrated: 24-02-2021      DIN4150-3 + Freq 25 mm/s 1-315Hz, Z3



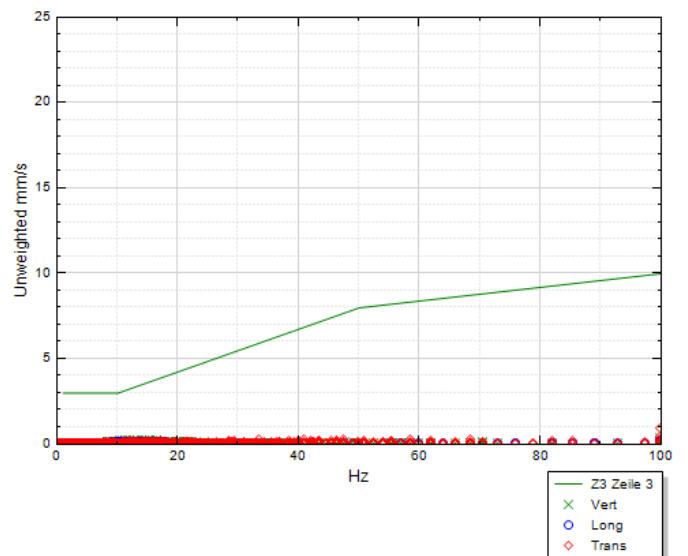
03 - 65090 T Ryesgade 20      C12T, S/N: 65092, Calibrated: 24-02-2021      DIN4150-3 + Freq 25 mm/s 1-315Hz, Z3



	C12V	C12L	C12T
<b>Unw Max:</b>	0,33 mm/s	0,19 mm/s	0,94 mm/s
<b>Frequency:</b>	158,0 Hz	108,0 Hz	102,0 Hz
<b>Date:</b>	25-04-2022	25-04-2022	25-04-2022
<b>Time:</b>	12:33:00	12:33:00	12:33:00
<b>Customer:</b>			
<b>Notes:</b>			

Unw = Unweighted

DIN4150-3

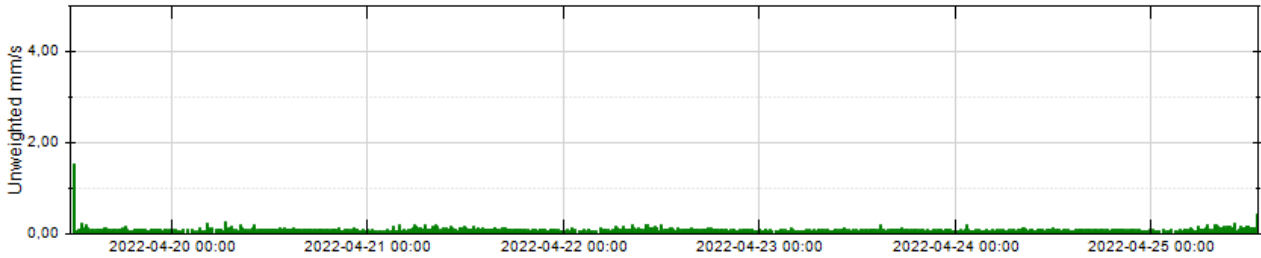


**Report: Multi report**

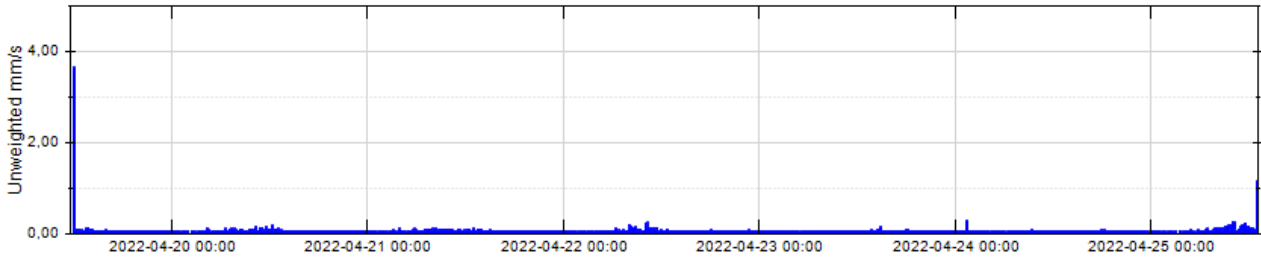
**Project:** Sølund - Ryesgade\_KBH - PAA

**From:** 19-04-2022 00:00:00  
**To:** 25-04-2022 23:59:59  
**Values from:** 19-04-2022 12:03:00  
**Values up to:** 25-04-2022 12:58:40

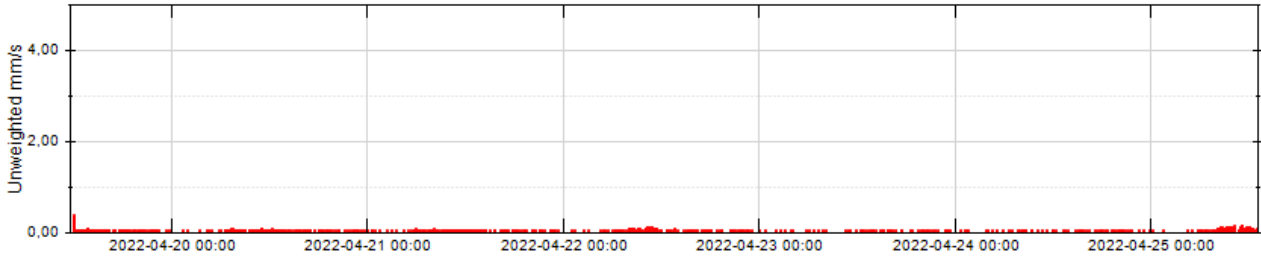
04 - 65050 V Læssøesgade 16, baggårdC12V, S/N: 65050, Calibrated: 24-02-2021 DIN4150-3 + Freq 25 mm/s 1-315Hz, Z3



04 - 65050 L Læssøesgade 16, baggårdC12L, S/N: 65051, Calibrated: 24-02-2021 DIN4150-3 + Freq 25 mm/s 1-315Hz, Z3

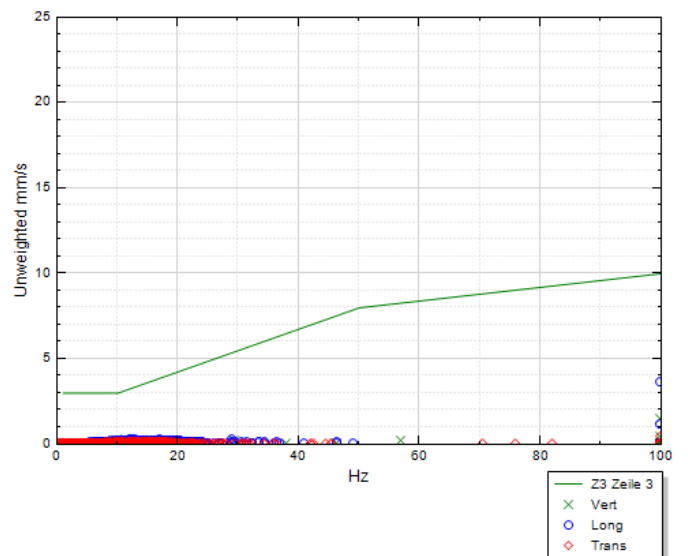


04 - 65050 T Læssøesgade 16, baggårdC12T, S/N: 65052, Calibrated: 24-02-2021 DIN4150-3 + Freq 25 mm/s 1-315Hz, Z3



DIN4150-3

	C12V	C12L	C12T
<b>Unw Max:</b>	1,51 mm/s	3,66 mm/s	0,39 mm/s
<b>Frequency:</b>	410,0 Hz	410,0 Hz	410,0 Hz
<b>Date:</b>	19-04-2022	19-04-2022	19-04-2022
<b>Time:</b>	12:03:00	12:03:00	12:03:00
<b>Customer:</b>			
<b>Notes:</b>			



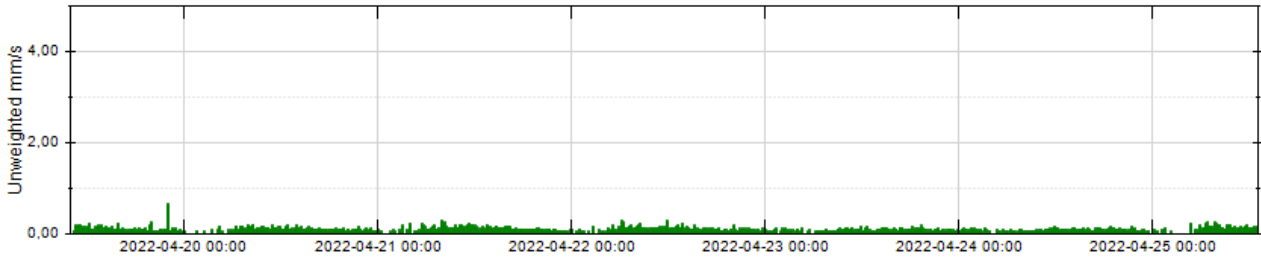
Unw = Unweighted

**Report: Multi report**

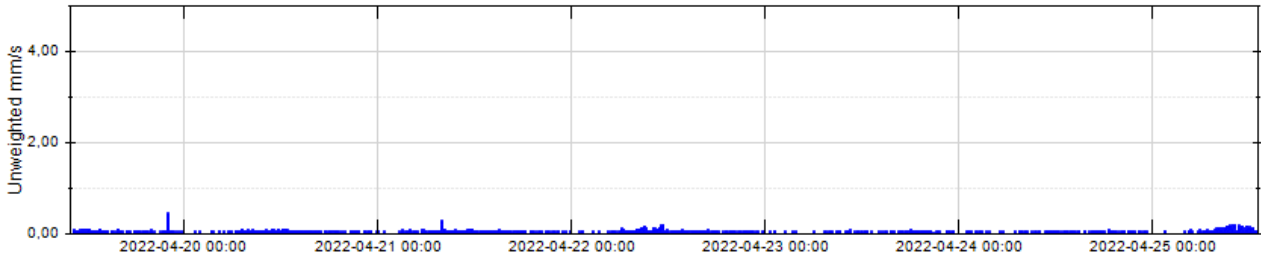
**Project:** Sølund - Ryesgade\_KBH - PAA

**From:** 19-04-2022 00:00:00  
**To:** 25-04-2022 23:59:59  
**Values from:** 19-04-2022 10:25:20  
**Values up to:** 25-04-2022 13:00:20

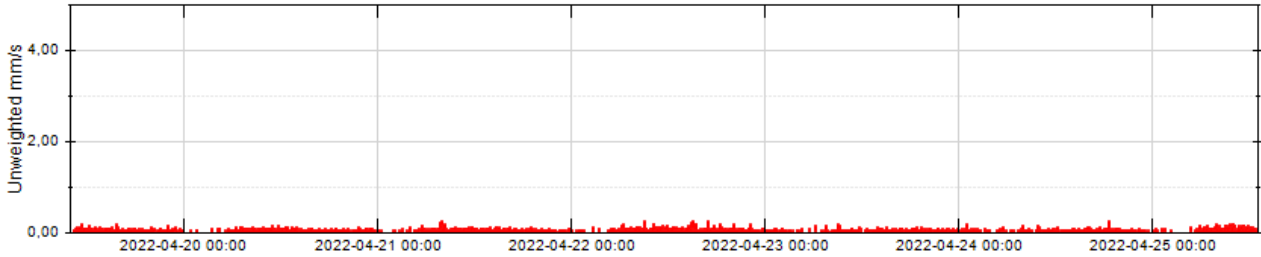
05 - 66700 V Læssøesgade 13A C12V, S/N: 66700, Calibrated: 18-03-2021 DIN4150-3 + Freq 25 mm/s 1-315Hz, Z3



05 - 66700 L Læssøesgade 13A C12L, S/N: 66701, Calibrated: 18-03-2021 DIN4150-3 + Freq 25 mm/s 1-315Hz, Z3

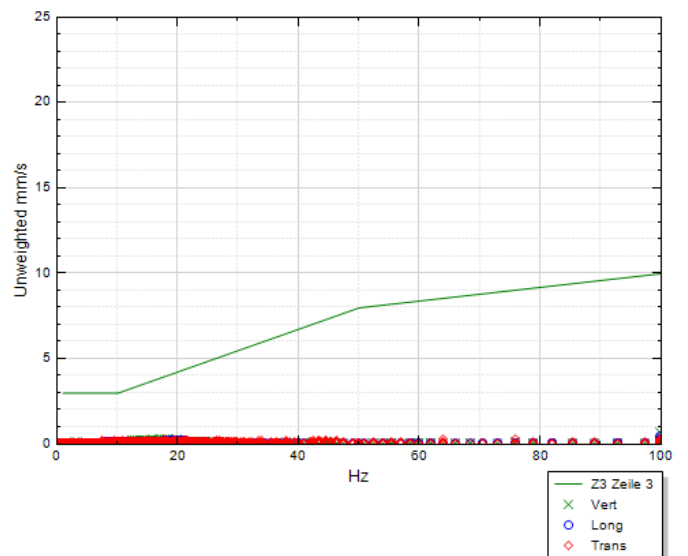


05 - 66700 T Læssøesgade 13A C12T, S/N: 66702, Calibrated: 18-03-2021 DIN4150-3 + Freq 25 mm/s 1-315Hz, Z3



DIN4150-3

	C12V	C12L	C12T
<b>Unw Max:</b>	0,66 mm/s	0,45 mm/s	0,25 mm/s
<b>Frequency:</b>	341,0 Hz	128,0 Hz	64,0 Hz
<b>Date:</b>	19-04-2022	19-04-2022	24-04-2022
<b>Time:</b>	22:04:20	22:04:20	18:41:20
<b>Customer:</b>			
<b>Notes:</b>			



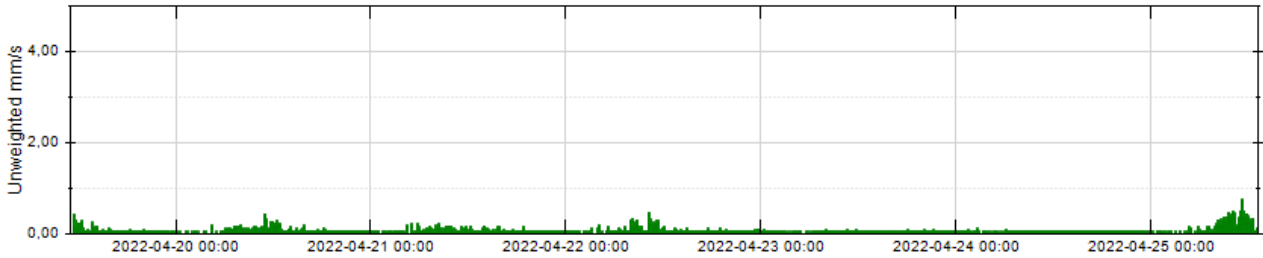
Unw = Unweighted

**Report: Multi report**

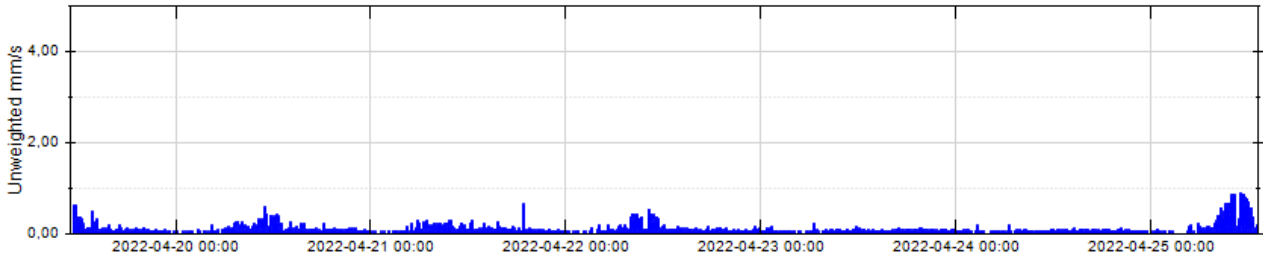
**Project:** Sølund - Ryesgade\_KBH - PAA

**From:** 19-04-2022 00:00:00  
**To:** 25-04-2022 23:59:59  
**Values from:** 19-04-2022 11:28:20  
**Values up to:** 25-04-2022 13:02:40

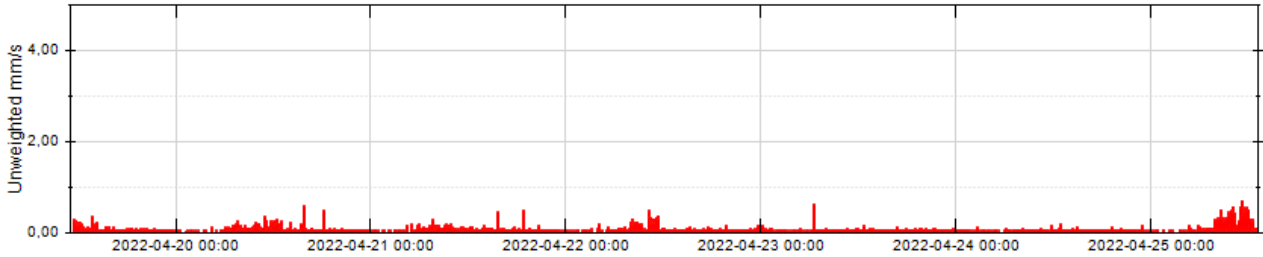
06 - 70720 V Ryesgade 9      C12V, S/N: 70720, Calibrated: 26-03-2022      DIN4150-3 + Freq 25 mm/s 1-315Hz, Z3



06 - 70720 L Ryesgade 9      C12L, S/N: 70721, Calibrated: 26-03-2022      DIN4150-3 + Freq 25 mm/s 1-315Hz, Z3



06 - 70720 T Ryesgade 9      C12T, S/N: 70722, Calibrated: 26-03-2022      DIN4150-3 + Freq 25 mm/s 1-315Hz, Z3



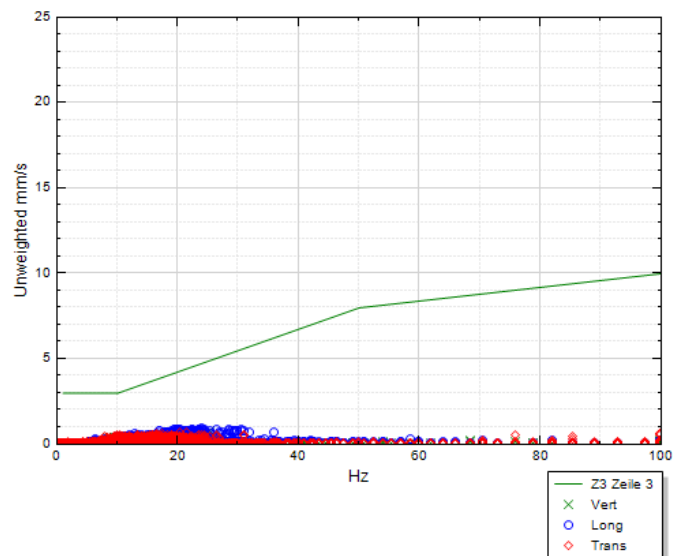
DIN4150-3

	C12V	C12L	C12T
<b>Unw Max:</b>	0,74 mm/s	0,87 mm/s	0,68 mm/s
<b>Frequency:</b>	25,5 Hz	24,0 Hz	20,5 Hz
<b>Date:</b>	25-04-2022	25-04-2022	25-04-2022
<b>Time:</b>	11:06:40	11:04:20	11:06:40

**Customer:**

**Notes:**

Unw = Unweighted



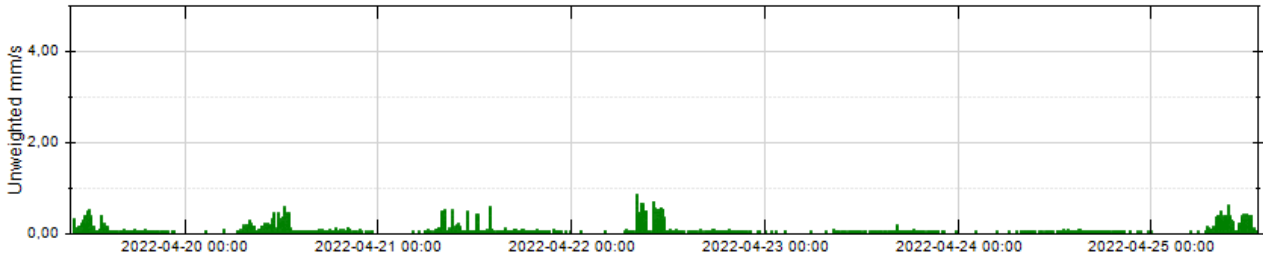


**Report: Multi report**

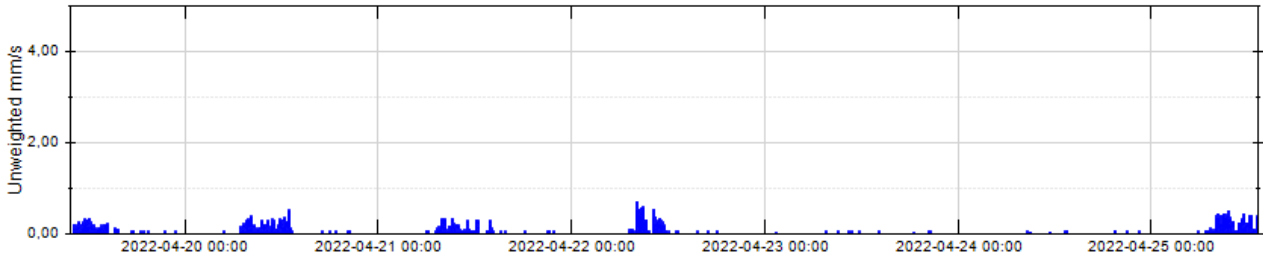
**Project:** Sølund - Ryesgade\_KBH - PAA

**From:** 19-04-2022 00:00:00  
**To:** 25-04-2022 23:59:59  
**Values from:** 19-04-2022 10:12:20  
**Values up to:** 25-04-2022 13:09:00

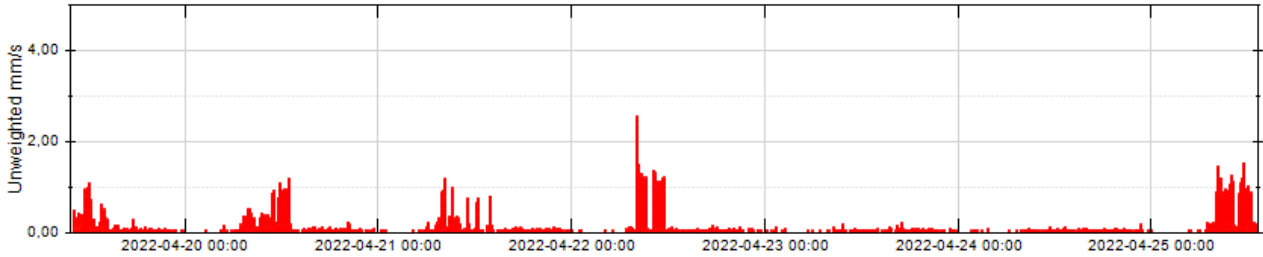
07 - 70460 V Læssøesgade 3      C12V, S/N: 70460, Calibrated: 02-02-2022      DIN4150-3 + Freq 25 mm/s 1-315Hz, Z3



07 - 70460 L Læssøesgade 3      C12L, S/N: 70461, Calibrated: 02-02-2022      DIN4150-3 + Freq 25 mm/s 1-315Hz, Z3



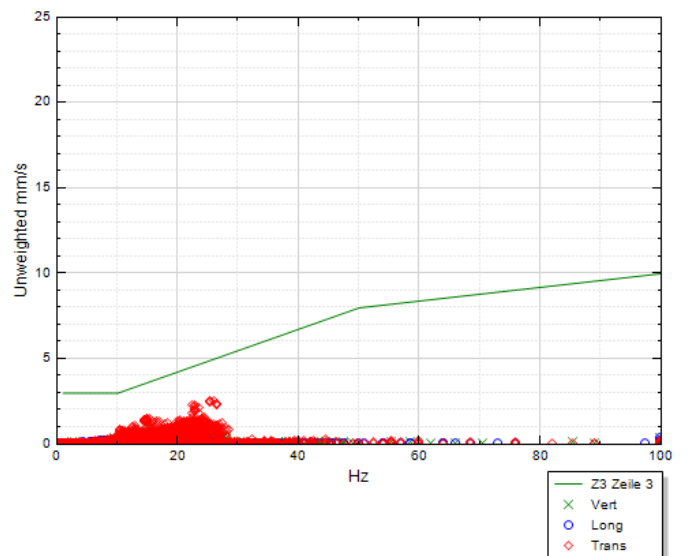
07 - 70460 T Læssøesgade 3      C12T, S/N: 70462, Calibrated: 02-02-2022      DIN4150-3 + Freq 25 mm/s 1-315Hz, Z3



DIN4150-3

	C12V	C12L	C12T
<b>Unw Max:</b>	0,84 mm/s	0,68 mm/s	2,53 mm/s
<b>Frequency:</b>	19,5 Hz	17,5 Hz	25,5 Hz
<b>Date:</b>	22-04-2022	22-04-2022	22-04-2022
<b>Time:</b>	08:07:00	08:06:40	08:07:40
<b>Customer:</b>			
<b>Notes:</b>			

Unw = Unweighted

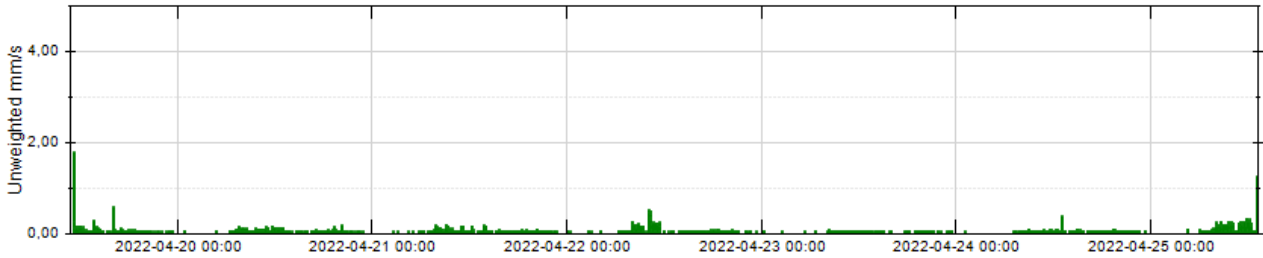


**Report: Multi report**

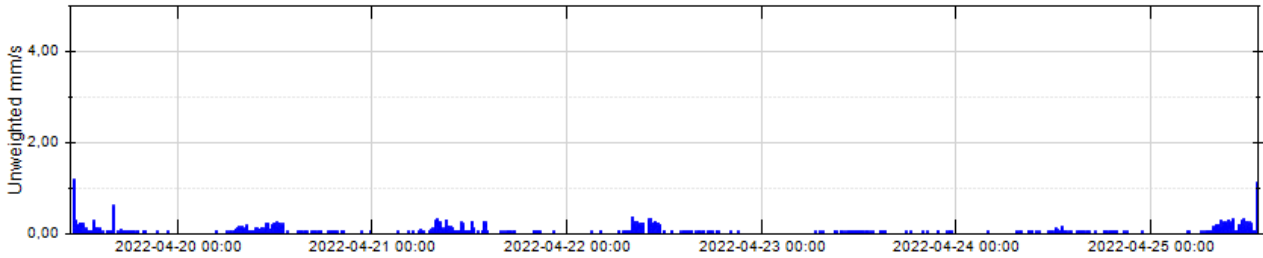
**Project:** Sølund - Ryesgade\_KBH - PAA

**From:** 19-04-2022 00:00:00  
**To:** 25-04-2022 23:59:59  
**Values from:** 19-04-2022 11:12:40  
**Values up to:** 25-04-2022 13:07:40

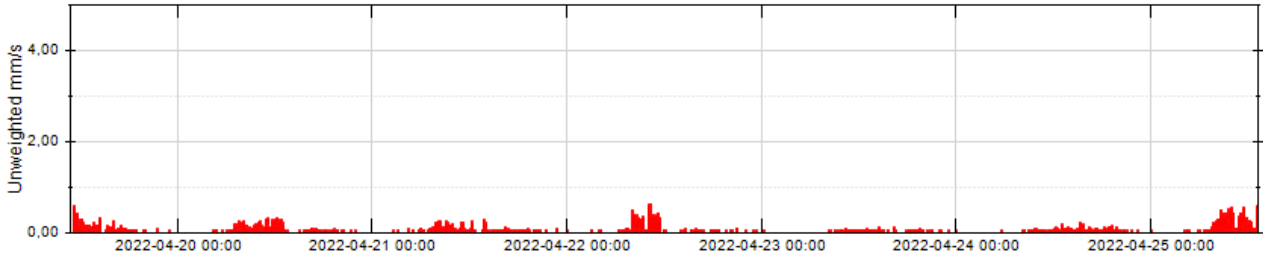
08 - 70330 V Læssøesgade 5      C12V, S/N: 70330, Calibrated: 26-03-2022      DIN4150-3 + Freq 25 mm/s 1-315Hz, Z3



08 - 70330 L Læssøesgade 5      C12L, S/N: 70331, Calibrated: 26-03-2022      DIN4150-3 + Freq 25 mm/s 1-315Hz, Z3



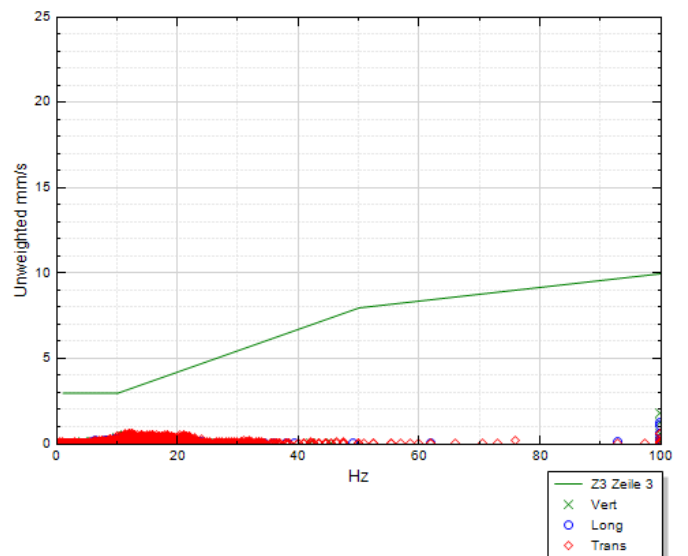
08 - 70330 T Læssøesgade 5      C12T, S/N: 70332, Calibrated: 26-03-2022      DIN4150-3 + Freq 25 mm/s 1-315Hz, Z3



	C12V	C12L	C12T
<b>Unw Max:</b>	1,78 mm/s	1,20 mm/s	0,61 mm/s
<b>Frequency:</b>	293,0 Hz	410,0 Hz	12,0 Hz
<b>Date:</b>	19-04-2022	19-04-2022	22-04-2022
<b>Time:</b>	11:13:20	11:13:20	10:14:40
<b>Customer:</b>			
<b>Notes:</b>			

Unw = Unweighted

DIN4150-3

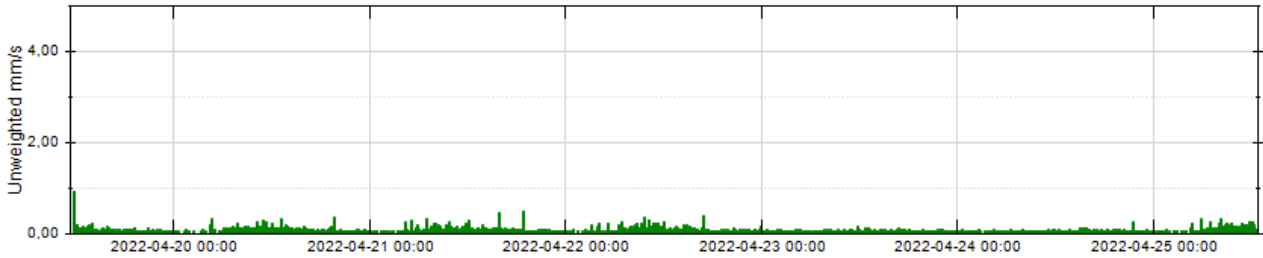


**Report: Multi report**

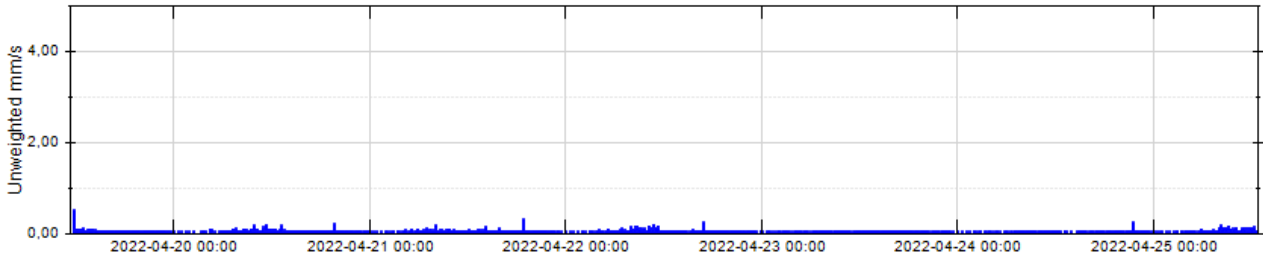
**Project:** Sølund - Ryesgade\_KBH - PAA

**From:** 19-04-2022 00:00:00  
**To:** 25-04-2022 23:59:59  
**Values from:** 19-04-2022 11:46:00  
**Values up to:** 25-04-2022 12:44:20

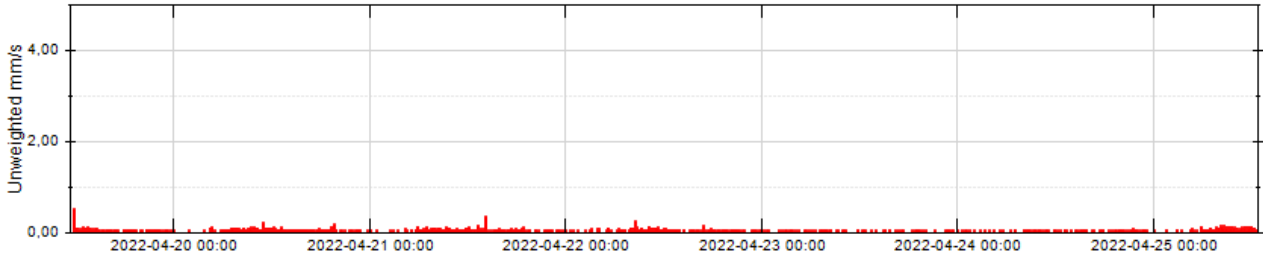
09 - 64120 V Holms Auto matic      C12V, S/N: 64120, Calibrated: 02-02-2022      DIN4150-3 + Freq 25 mm/s 1-315Hz, Z3



09 - 64120 L Holms Auto matic      C12L, S/N: 64121, Calibrated: 02-02-2022      DIN4150-3 + Freq 25 mm/s 1-315Hz, Z3

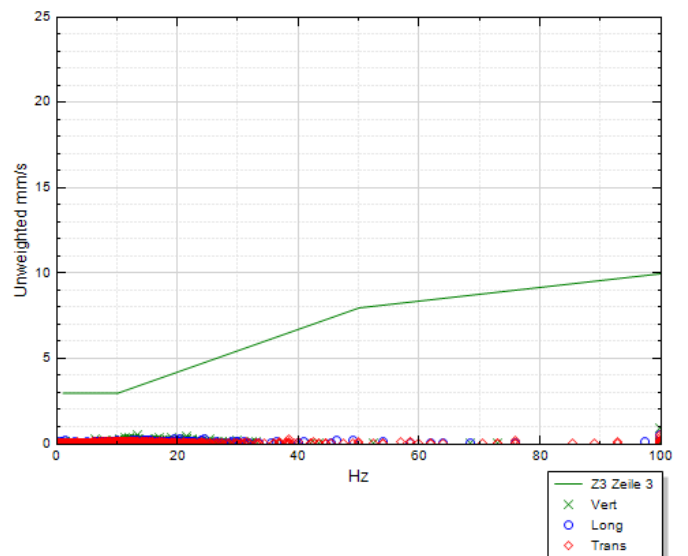


09 - 64120 T Holms Auto matic      C12T, S/N: 64122, Calibrated: 02-02-2022      DIN4150-3 + Freq 25 mm/s 1-315Hz, Z3



DIN4150-3

	C12V	C12L	C12T
<b>Unw Max:</b>	0,93 mm/s	0,53 mm/s	0,51 mm/s
<b>Frequency:</b>	341,0 Hz	512,0 Hz	341,0 Hz
<b>Date:</b>	19-04-2022	19-04-2022	19-04-2022
<b>Time:</b>	11:46:00	11:46:00	11:46:00
<b>Customer:</b>			
<b>Notes:</b>			



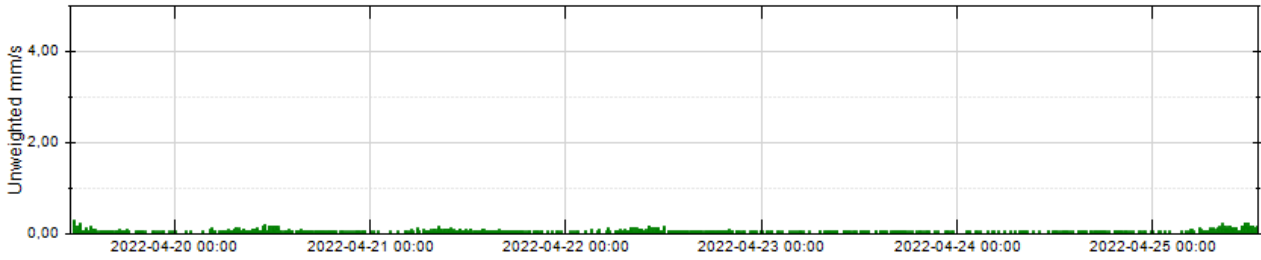
Unw = Unweighted

**Report: Multi report**

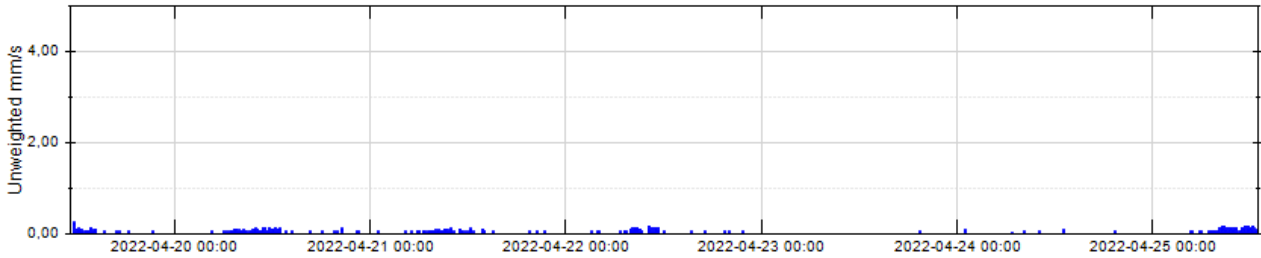
**Project:** Sølund - Ryesgade\_KBH - PAA

**From:** 19-04-2022 00:00:00  
**To:** 25-04-2022 23:59:59  
**Values from:** 19-04-2022 11:40:20  
**Values up to:** 25-04-2022 12:50:00

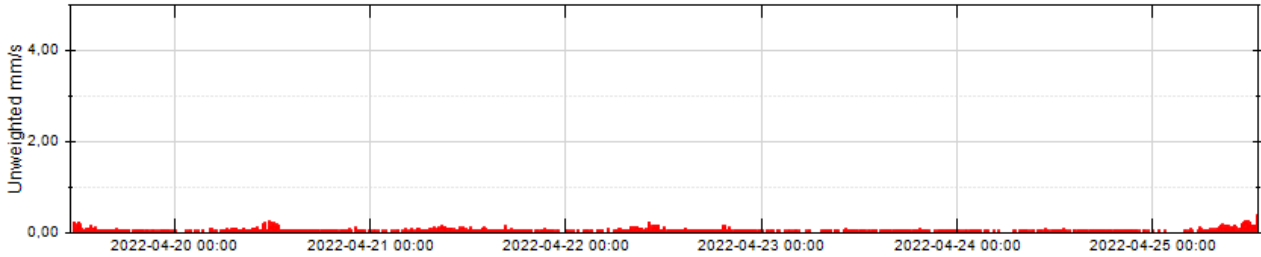
10 - 66410 V Ryesgade 15-17      C12V, S/N: 66410, Calibrated: 06-04-2021      DIN4150-3 + Freq 25 mm/s 1-315Hz, Z3



10 - 66410 L Ryesgade 15-17      C12L, S/N: 66411, Calibrated: 06-04-2021      DIN4150-3 + Freq 25 mm/s 1-315Hz, Z3

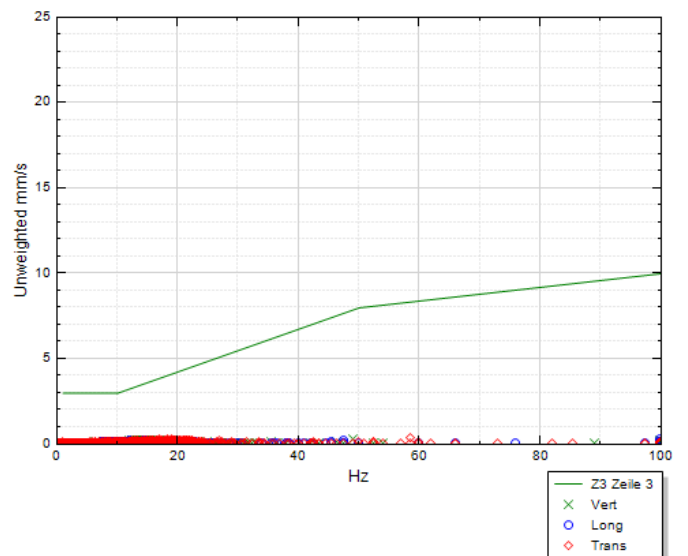


10 - 66410 T Ryesgade 15-17      C12T, S/N: 66412, Calibrated: 06-04-2021      DIN4150-3 + Freq 25 mm/s 1-315Hz, Z3



DIN4150-3

	C12V	C12L	C12T
<b>Unw Max:</b>	0,28 mm/s	0,26 mm/s	0,37 mm/s
<b>Frequency:</b>	49,0 Hz	341,0 Hz	58,5 Hz
<b>Date:</b>	19-04-2022	19-04-2022	25-04-2022
<b>Time:</b>	11:40:40	11:40:40	12:50:00
<b>Customer:</b>			
<b>Notes:</b>			



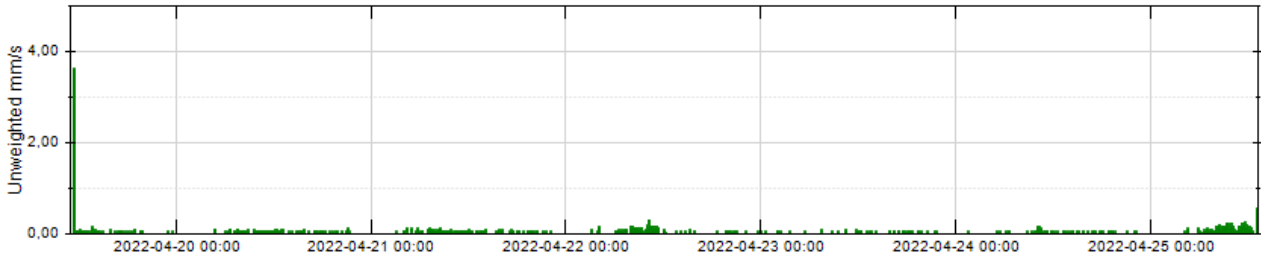
Unw = Unweighted

**Report: Multi report**

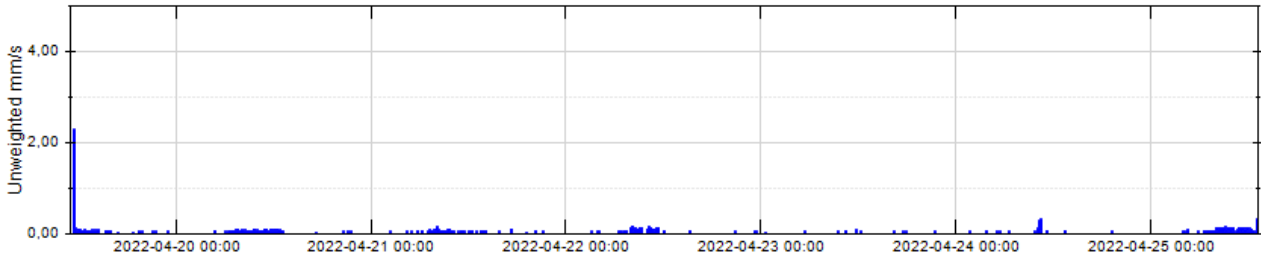
**Project:** Sølund - Ryesgade\_KBH - PAa

**From:** 19-04-2022 00:00:00  
**To:** 25-04-2022 23:59:59  
**Values from:** 19-04-2022 11:24:40  
**Values up to:** 25-04-2022 13:11:20

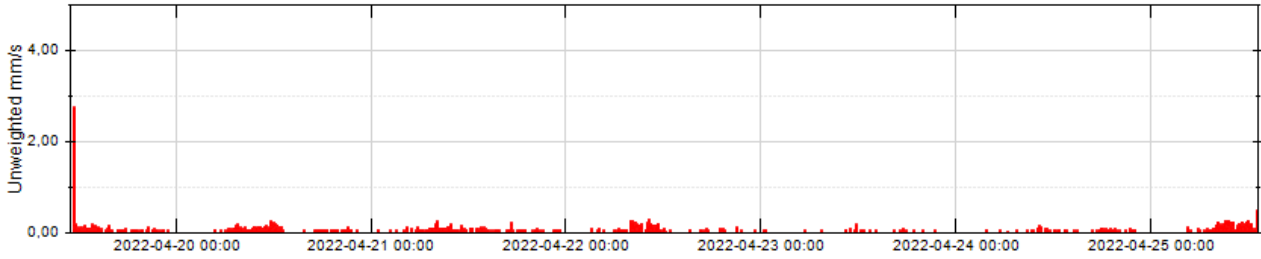
11 - 66440 V Schleppegrellsgade 10 C12V, S/N: 66440, Calibrated: 04-05-2021 DIN4150-3 + Freq 25 mm/s 1-315Hz, Z3



11 - 66440 L Schleppegrellsgade 10 C12L, S/N: 66441, Calibrated: 04-05-2021 DIN4150-3 + Freq 25 mm/s 1-315Hz, Z3



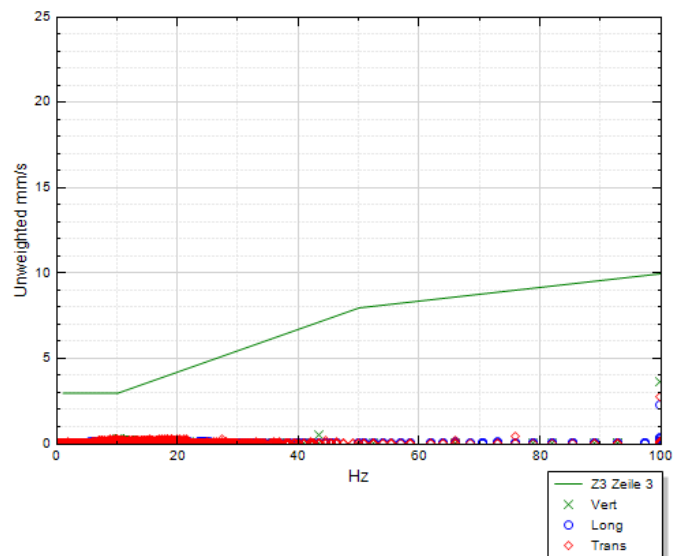
11 - 66440 T Schleppegrellsgade 10 C12T, S/N: 66442, Calibrated: 04-05-2021 DIN4150-3 + Freq 25 mm/s 1-315Hz, Z3



	C12V	C12L	C12T
<b>Unw Max:</b>	3,63 mm/s	2,29 mm/s	2,76 mm/s
<b>Frequency:</b>	205,0 Hz	341,0 Hz	205,0 Hz
<b>Date:</b>	19-04-2022	19-04-2022	19-04-2022
<b>Time:</b>	11:24:40	11:24:40	11:24:40
<b>Customer:</b>			
<b>Notes:</b>			

Unw = Unweighted

DIN4150-3

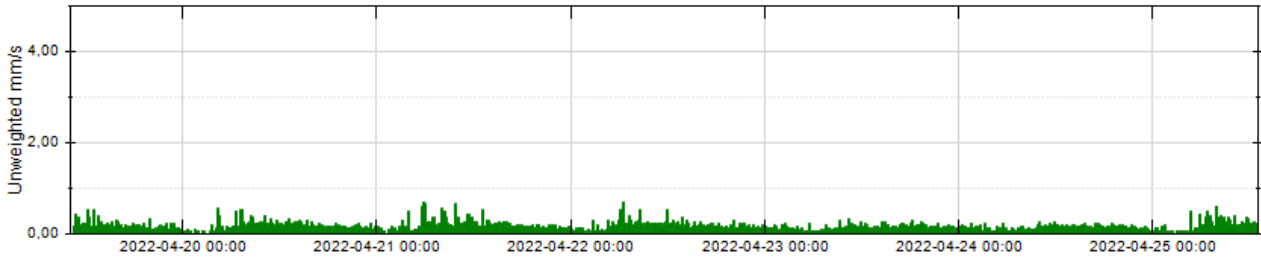


**Report: Multi report**

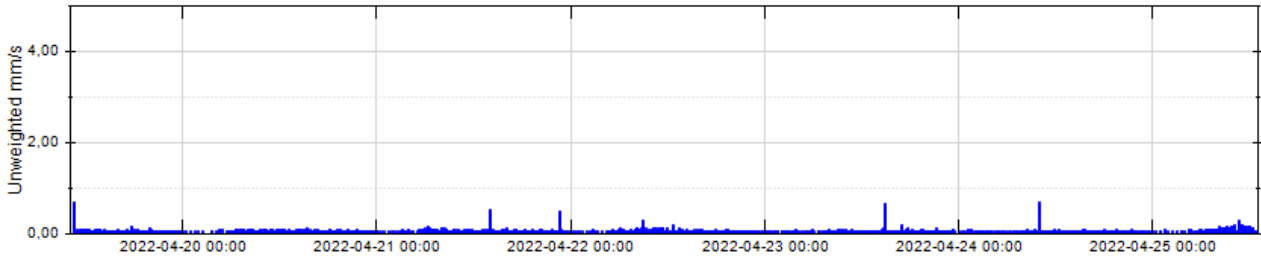
**Project:** Sølund - Ryesgade\_KBH - PAA

**From:** 19-04-2022 00:00:00  
**To:** 25-04-2022 23:59:59  
**Values from:** 19-04-2022 10:31:00  
**Values up to:** 25-04-2022 12:57:00

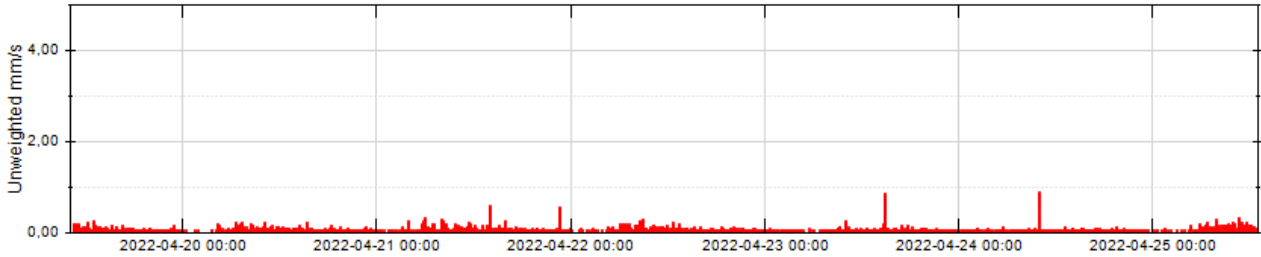
12 - 70360 V Læssøesgade 16      C12V, S/N: 70360, Calibrated: 27-03-2022      DIN4150-3 + Freq 25 mm/s 1-315Hz, Z3



12 - 70360 L Læssøesgade 16      C12L, S/N: 70361, Calibrated: 27-03-2022      DIN4150-3 + Freq 25 mm/s 1-315Hz, Z3



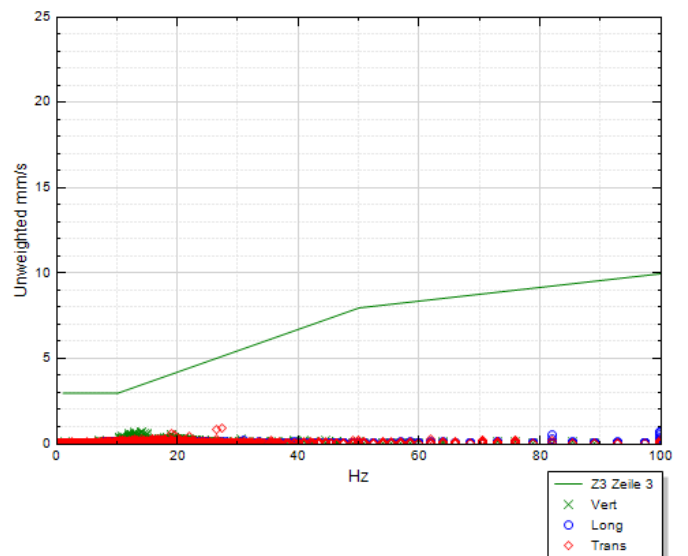
12 - 70360 T Læssøesgade 16      C12T, S/N: 70362, Calibrated: 27-03-2022      DIN4150-3 + Freq 25 mm/s 1-315Hz, Z3



	C12V	C12L	C12T
<b>Unw Max:</b>	0,68 mm/s	0,69 mm/s	0,88 mm/s
<b>Frequency:</b>	14,0 Hz	410,0 Hz	27,5 Hz
<b>Date:</b>	21-04-2022	19-04-2022	24-04-2022
<b>Time:</b>	05:44:20	10:31:00	09:56:40
<b>Customer:</b>			
<b>Notes:</b>			

Unw = Unweighted

DIN4150-3

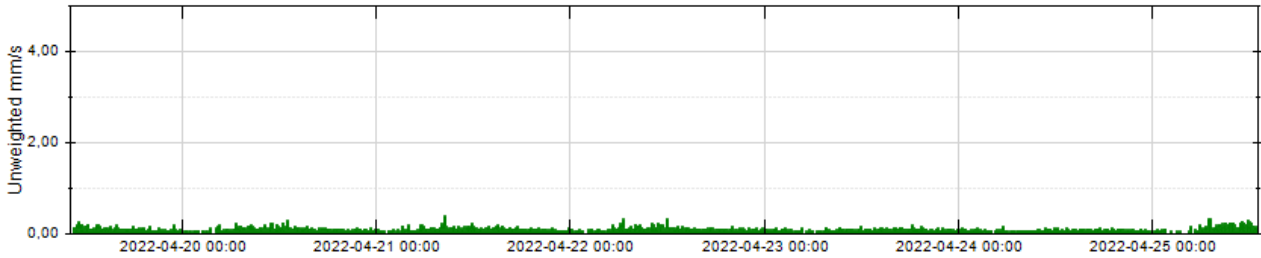


**Report: Multi report**

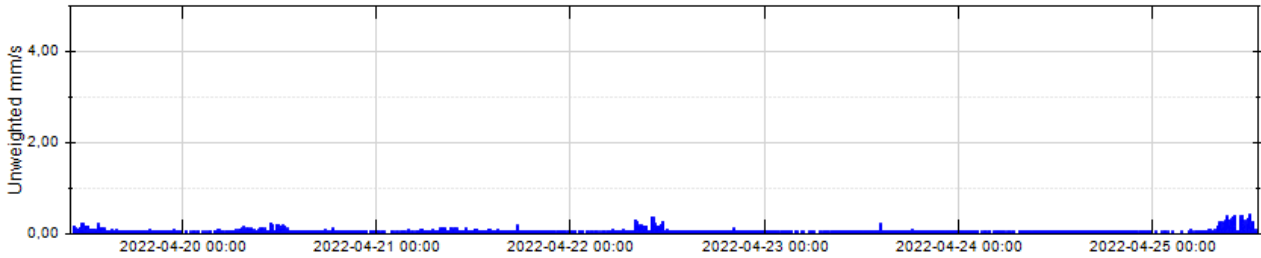
**Project:** Sølund - Ryesgade\_KBH - PAA

**From:** 19-04-2022 00:00:00  
**To:** 25-04-2022 23:59:59  
**Values from:** 19-04-2022 10:36:00  
**Values up to:** 25-04-2022 12:55:40

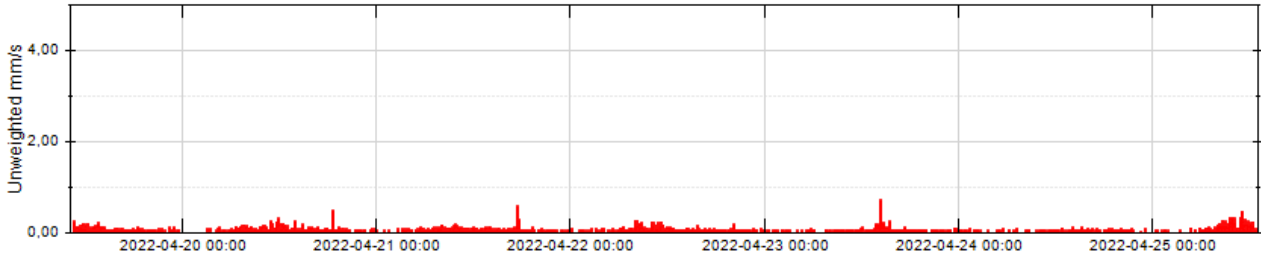
13 - 64130 V Læssøesgade 10-12 C12V, S/N: 64130, Calibrated: 09-02-2021 DIN4150-3 + Freq 25 mm/s 1-315Hz, Z3



13 - 64130 L Læssøesgade 10-12 C12L, S/N: 64131, Calibrated: 09-02-2021 DIN4150-3 + Freq 25 mm/s 1-315Hz, Z3

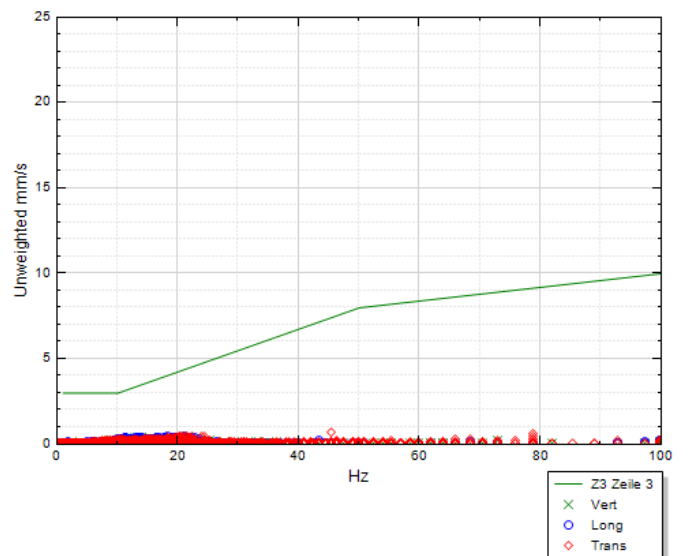


13 - 64130 T Læssøesgade 10-12 C12T, S/N: 64132, Calibrated: 09-02-2021 DIN4150-3 + Freq 25 mm/s 1-315Hz, Z3



DIN4150-3

	C12V	C12L	C12T
<b>Unw Max:</b>	0,38 mm/s	0,42 mm/s	0,71 mm/s
<b>Frequency:</b>	13,0 Hz	21,0 Hz	45,5 Hz
<b>Date:</b>	21-04-2022	25-04-2022	23-04-2022
<b>Time:</b>	08:27:40	11:59:20	14:17:40
<b>Customer:</b>			
<b>Notes:</b>			



Unw = Unweighted